

**CHRIST EPISCOPL
CHURCH**

REV. BOYD PARKER, Rector

Holy Communion 8 a. m.
Church School 9:45 a. m.
Morning 11 a. m.

**FIRST METHODIST
EPISCOPAL CHURCH**

Bridger at Third

C. S. REYNOLDS, Pastor

11:00

DR. WALTER C. BUCKNER OF PASADENA

Supt. of the District
A Worth While Preacher

7:30

District Officers
Of the Epworth League
Young People's Society

9:45—Bible School 6:30—Epworth League

GATEWAY HOTEL

CORNER MAIN AND STEWART STREETS
Now Open For Business
COMFORTABLE ROOMS
RATES \$1.00 UP

CAMP & LAWN FURNITURE AUTO TOPS
FENTS & AWNINGS SEAT COVERS
CANVAS DECKS SIDE CURTAINS
SLEEPING PORCHES UPHOLSTERING
FLAGS & FLAG POLES JPHOLSTERING MADE &
EVERYTHING IN CANVAS REPAIRED

Auto Top & Awning Shop

333 No. Main Street

STORAGE MOVING PACKING SHIPPING
FIREPROOF STORAGE
NORTH ON SOUTH—
OR EAST ON WEST—
WE MOVE WITH CARE,
WE MOVE YOU BEST!

Las Vegas Transfer & Taxi Co.

19 1/2 Fremont Street
Res. Phone 230 Office Phone 210
Las Vegas, Nevada

LOW FARE

To the

EAST and SOUTH

From February 1st until March 2nd, 1929—one way tickets to all points in the Eastern and Southern States will be on sale at Union Pacific Stations in Nevada, at greatly reduced fares.

Full information will be given upon application to agents.

THESE FARES ARE FOR
ONE WAY ONLY

via

**UNION PACIFIC
SYSTEM**

THE OVERLAND ROUTE

**Culture Thousand Years
Old Now Being Dug Up
At Door To Las Vegas**

(Continued from page one.)
points farther east in Southern Utah and in Northern Arizona. The floor plan of the house shows a circular patio surrounded by a roughly circular form by rectangular living rooms and by small irregular oval shaped storage rooms and graneries. There are two entrances to the patio which might be successfully defended against an attacking force and held indefinitely unless the stored water supply was exhausted.

Skeleton Unearthed
Mr. Irving Hayden, of Riverside, California, Assistant Archaeologist, was engaged in excavating an ancient burial outside the house walls, and Mrs. Ruth Henley, Assistant Curator of the Southwestern Museum of Los Angeles, was assisting him by screening the dirt removed from around the skeleton to find any beads, turquoise, arrowheads, or other small artifacts usually present in Indian graves. A ceremonial burial jar had been placed beside the body and crushed before the grave was closed to "kill" the jar, or to release the spirit or entity of its existence.

The skull of the body was turned face down resting on one of the hands and the knees were flexed against the breast so that the grave pit was less than three feet in length. The bones and the skull length indicated that the man was slightly over five feet in height, an adult male with a sturdy chest and well preserved teeth.

Detailed information about the discoveries made by the expedition is being released by Mr. Hayden exclusively through "The Riverside Enterprise."

Under the expert guidance of Mr. Hayden and his son, I visited Pueblo Grande about three miles from St. Thomas; the workings of an old Indian salt mine on the Virgin River, and the Atlatl Rock in the vicinity of the Valley of Fire on the old abandoned stage road from Las Vegas to St. Thomas.

Wooden Rafters
At Pueblo Grande the roof construction of the old houses is shown in the restored example to have consisted of round wooden rafters about eighteen inches apart on which were laid side by side in contact willow branches one-half to three-quarters of an inch in diameter. Above this at right angles to the willow the roof was thatched with tule reeds and covered with several inches of adobe soil. I saw a piece of burnt adobe in one of the excavated houses which had been a part of the roof covering.

The destruction of the roof by fire had baked the adobe roof covering and permanently retained the imprint of the willow branches in an imperishable record that discloses the roof construction to the intelligent archaeologist as it originally existed with entire certainty.

The road leading to Pueblo Grande from St. Thomas is practically impassable by reason of sand and unbridged acequias; the restored buildings show a lack of maintenance, care, and a small museum building in which Gov. Scruggs caused to be housed typical artifacts and pottery from the excavated houses, has been broken into by vandals and looted.

Pictograph Found
At the Atlatl Rock, about 12 miles from St. Thomas, is to be seen, carved as a pictograph on the surface of a huge mass of red sand stone, a picture of the Atlatl, a device used by the pre-Pueblo Indians for increasing the power of the arm to throw a dart for game hunting and warfare. This device was made of wood with a double finger hole at one end and a groove in which the dart was fixed at the other end. It is said by archaeologists to have been in use over a very large area of Western America preceding the discovery of the bow and arrow.

On the surface of the rock is pecked out with stone hammers, through the black desert varnish covering the rock, the picture of an Atlatl. Below it is a picture of the long dart used with it and beneath this again the figure of a man using the device to throw a dart at a mountain goat. The man stands on a mountain below which is a trail where two women, probably a wife and daughter, are watching his hunting prowess with arms uplifted in admiration and anticipation of goat stew. The trail on which they are standing leads to the foot of a long ladder at the top of which is to be seen the platform of a rock cave with the corner of a square house visible in the cave opening of the type used by the Cliff Dwellers.

Marks Are Plain
Innumerable pictographs are chipped out over hundreds of square feet of adjacent rock surface, not yet interpreted but as fresh and plainly marked as if made last year instead of perhaps 2500 years ago when the Athenians were building the Parthenon.

At the salt mine Mr. Hayden exhibited evidence of the methods pursued by the Indians in mining salt at a time, dated by the tools in use, considerably preceding the Christian Era. The workmen used stone hammers of a crude design and finish with wooden handles fastened to the hammers by means of twine made from the yucca plant.

They channelled the solid rock which is practically a mass of pure salt crystals into small circular blocks about 14 inches in diameter to a depth of four or five inches and with a larger two-handed hammer were able to break away the section thus channelled. This operation leaves the bottoms of the channels untouched and these are now visible on the walls and floors of the cavern as a connected pat-

tern, like a decorative design. Vandals are writing their names over these old records of ancient mining operations and the tunnels and natural caverns extending hundreds of feet into the mountain through a thick vein of shining white transparent salt crystals are unguarded and not readily accessible.

Exposed Inviting Ruin
All the points herein mentioned are properly state monuments and should be protected from weather and vandalism by the state.

The development of Las Vegas as a tourist resort by means of suitable hotel accommodations will be greatly facilitated if visitors find here in addition to the amusements of golf and tennis and the interest in the construction of Boulder Dam and in the existence of the lake created by it, such points of historic interest as those briefly described.

It is suggested that the Las Vegas Chamber of Commerce is the natural liaison channel for bringing together the Federal Government, the states of Nevada and California and the city of Los Angeles into concerted action:

To complete the improvement of Arrowhead Trail from San Bernardino to Las Vegas;

To complete the Arrowhead Trail to Glendale;

To improve the roads from Glendale to Pueblo Grande and salt mines;

To restore and maintain a connecting road from Las Vegas to the Valley of Fire and to Atlatl Rock;

The mistake of a road contractor in erecting a road sign to Atlatl (Dart Thrower) Rock as "Adeline Rock" is a good joke on his ignorance but the failure to correct it immediately reflects unfavorably on the public spirit of the authorities of Clark county and of Las Vegas.

The intelligent self-interest of Los Angeles as the economic sizeran of her hinterland has been evidenced by her financial support of an Archaeological Expedition into this district but her further interest in making these points of historic significance readily accessible to her annual tourist migration, manifestly needs to be stimulated to insure good roads to the economic boundaries of her back country. The advantage to Las Vegas flowing from such self-interested neighborliness can hardly be imagined.

**HOTEL GRAND
TO OPEN SOON**

L. B. Settle announces the opening of the Hotel Grand about the middle of the week. The new hostelry is located in the second story of the recently completed Rockwell building.

Mr. Settle states that the furnishings are new and modern, while the rooms are clean and attractive. Running hot and cold water in each room is one of the features.

**BAPTIST PARSONAGE
NEARS COMPLETION**

Work on the new Baptist parsonage is proceeding rapidly, and thirty days should see the building ready for occupancy.

The house is stucco finished and attractively arranged containing a large living room across the front, with open fireplace. A dining room, several bedrooms convenient kitchen, and sleeping porch are also features. It is being erected on land belonging to the Baptist congregation just north of the church building.

HIKER IS DETAINED
SAN FRANCISCO, Mar. 16, (AP)—Lorraine Gerken, nineteen, of Ridgville Corners, Ohio, hitch-hiking from Portland, Oregon, to Ventura, California, to marry his fiancée, was detained by the Travelers' Aid Society and shunted to the juvenile detention home. The juvenile authorities wired his mother at Ridgville Corners.

TWO HURT IN TRUCK UPSET
The upsetting of a truck Thursday a short distance from this city caused the injury of Simon Castro and Juan B. Case, of Silver City, New Mexico, when they were pinned under the truck. They were going to Littlefield with a caterpillar tractor on the truck.

MADGE WESTERN BREAKS ARM
Madge Western has a broken arm as the result of a fall yesterday while playing volleyball in the high school gymnasium. She was rushed to the Las Vegas Hospital, and is now carrying the arm in a sling.

SEWER BONDS OKED
The senate passed ab ill providing that Caliente may issue \$50,000 worth of sewer construction bonds, early this week.

**INCOME TAX
ADVISOR**

Of San Francisco
IS AT OVERLAND HOTEL
Federal Returns Carefully Prepared
FOR APPOINTMENT
PHONE 370

**USED
Furniture**

DINING ROOM SUITES
KITCHEN CHAIRS
KITCHEN TABLES
SANITARY COTS AND
DAY BEDS
OAK TYPEWRITER DESK
FLAT TOP OAK DESKS
SWIVEL CHAIRS AND
COSTUMERS
COMBINATION MARBLE
HOT WATER TANK AND
HEATER

And Many Other Articles At
A Real Saving
These Are Real Values
**NEVADA
FURNITURE CO.**
121 South First Street



**EXCEPT YE
REPENT**

YE SHALL ALL LIKE-
WISE PERISH
Luke 13:3

Evangelist Norborne L.
Wilson Will Speak at
**WESTSIDE
MISSION**

SUNDAY, MARCH 17th

11:00 A. M. and 7:30 P. M.

Splendid Sacred
Musical Program

Everybody Welcome
F. C. MORENO, Pastor

**INSURANCE ANNUAL STATEMENT
THE MASSACHUSETTS PROTECTIVE ASSURANCE CO.**
18 Chestnut Street, Worcester, Mass.

Capital (paid up in cash)	\$ 300,000.00
Assets	1,683,903.09
Liabilities, exclusive of capital and net surplus	1,063,706.92

INCOME

Premiums	\$ 544,695.30
Other sources	54,447.69
Total income, 1928	\$ 599,142.99

EXPENDITURES

Paid Policy Holders	\$ 70,282.18
Other expenditures	147,870.56
Total expenditures, 1928	\$ 218,152.74

NEVADA BUSINESS

Risks written	\$6,996,000.00
Premiums thereon	188,100.58
Losses incurred	8,000.00

Number of risks written 17
Amount of risks written 46,000.00
Premiums received 2,429.34
Number of policies in force December 31, 1928 41
Amount of said policies 100,500.00
LEMUEL G. HODGKINS, Secretary.

**INSURANCE ANNUAL STATEMENT
CONTINENTAL CASUALTY COMPANY**
Hammond, Indiana

Capital (paid up in cash)	\$3,000,000.00
Assets	21,596,813.04
Liabilities, exclusive of capital and net surplus	15,096,813.04

INCOME

Premiums	\$15,389,629.76
Other sources	1,163,588.83
Total income, 1928	16,553,218.59

EXPENDITURES

Paid policy holders	\$8,490,627.24
Dividends	480,000.00
Other expenditures	7,889,159.53
Total expenditures, 1928	\$14,859,826.77

BUSINESS, 1928

Premiums on Risks written	\$15,389,629.76
Losses incurred	7,028,865.11

NEVADA BUSINESS

Premiums received	\$28,825.78
Losses paid	16,476.05

E. G. TIMME, Secretary.
Pub. March 2, 9, 16, 23, 1929.

**We Build and Finance
Residence Income or
Business buildings**

**Crump - Merritt Realty
Company**

315 FREMONT

EARL NYE

H. C. ARMSTRONG

BUILDERS PLAN SERVICE

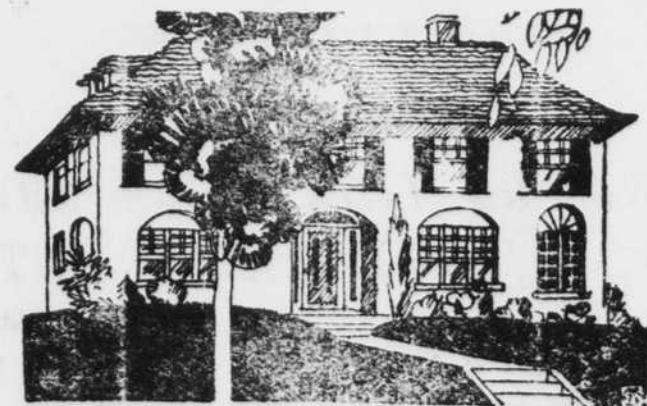
121 South Main Street

COMPLETE WORKING PLANS. SPECIFICATIONS ANDESTIMATES FURNISHED
FOR ANY BUILDING

PHONE 380

LAS VEGAS, NEVADA

**Own Your Own
HOME**



WHEN you build a home save money by putting into it only the highest grade of building materials. Depreciation costs can be cut to practically nothing if you use fine, seasoned lumber and protect it with full-bodied paint.

DON'T waste your money on splintery lumber and watery paint.

**Ed. Von Tobel Lumber Co.
High Grade Building Materials.**