

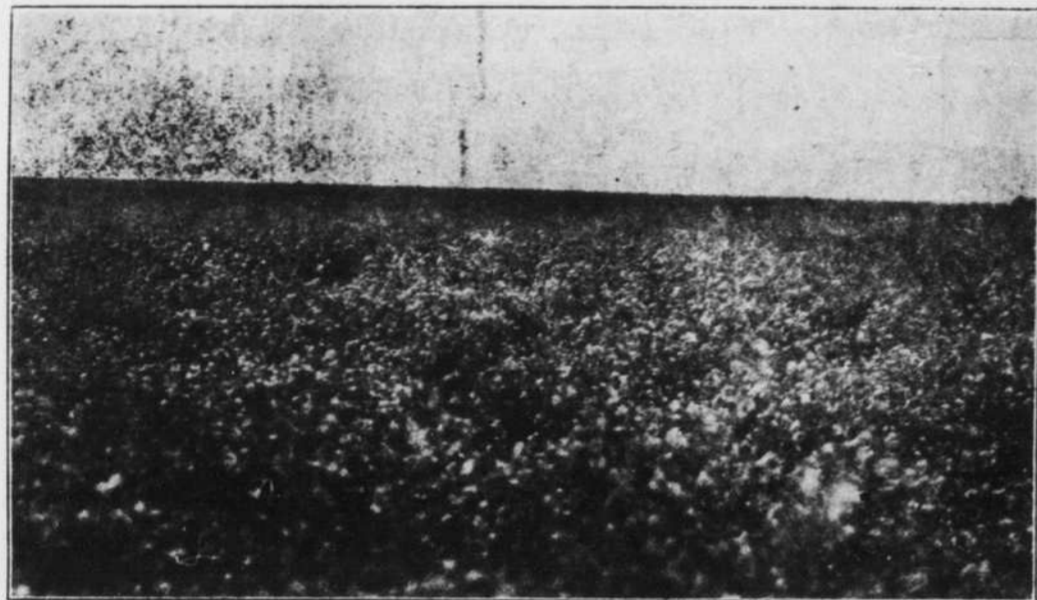
ARE YOU LOOKING FOR LAND WITH WATER? THE BERYL PUMPING DISTRICT

*In the Famous Escalante Valley, Iron County
Southwestern Utah, Seventeen Hours From Los Angeles*

INVITES YOU NOW

==== **100,000 Acres Ready For Cultivation Now** ====

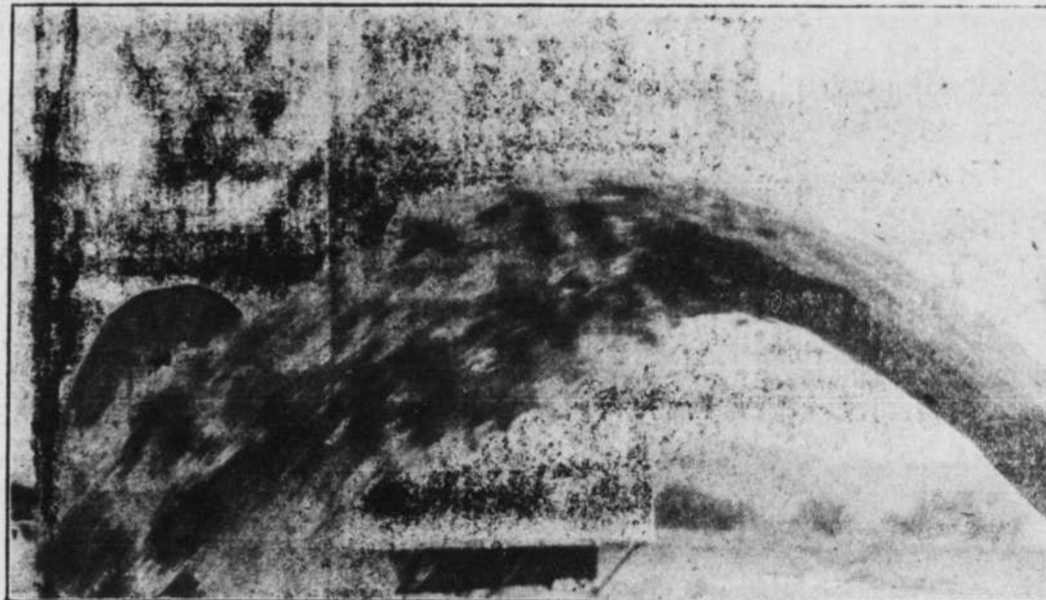
Alfalfa Land At Beryl, Utah



View of part of an entire section of alfalfa in the Beryl Pumping District, second year after planting; yield four and one-half tons per acre, per year.

An inexhaustible supply of pump water has been proved. \$15.00 per acre will give you an abundance of sweet, pure water, available all the time. The soil is immensely fertile and productive, the climate delightful; Southern California markets easily reached by main line of Union Pacific which runs through the tract.

Water At Beryl, Utah



Photograph of one of the 72 pump wells in the Beryl, Utah, District, flowing 1200 gallons per minute, with a maximum lift of only twenty-four feet.

Priced To Sell Now

To develop abundant water, put in pumping plant, clear, level and plant these lands to alfalfa and wheat will cost you only \$35.00 per acre. The purchase price of the raw land is \$55.00 per acre. Total cost \$90.00 per acre. Experts pronounce an acre of this land in crop to be worth at least \$250.00. Certainly, Beryl pump lands will steadily enhance in value as the great Boulder Dam project proceeds toward consummation.

What Others Say About These Lands

"THEY OFFER INCOMPARABLE ADVANTAGES TO DIRT FARMER AND INVESTOR," DR. GEO. P. CLEMENTS, U. S. CHAMBER OF COMMERCE AGRICULTURE ADVISOR.
"THE BREAD-BASKET OF SOUTHERN CALIFORNIA," W. W. ARMSTRONG, PRESIDENT NATIONAL COPPER BANK, SALT LAKE CITY.
"AN EMPIRE IN THE BUILDING," JOHN T. OLDROYD, UTAH'S STATE LAND COMMISSIONER.
"THE FINEST LANDS I HAVE EVER SEEN," W. T. CLARK, LAND INVESTIGATOR FOR THE UNION PACIFIC.

Pay \$25.00 Per Acre Cash

Balance on easy terms—Start now. Los Angeles needs the products this land can supply. Every acre of this rich pump land should be intensively cultivated long before the Boulder Dam is completed.

Beryl Pumping District Lands Yield Rich Crops



Three of the most profitable crops in the Beryl, Utah, district, in addition to alfalfa and alfalfa seed, are potatoes, wheat, and cabbage, pictured above—from photographs taken on our land.

Facts To Consider And Remember

THE BERYL PUMPING DISTRICT IS INDEPENDENT OF THE BOULDER DAM PROJECT, HAVING ABUNDANT WATER OF ITS OWN.
THE BERYL PUMPING DISTRICT IS A PROVEN DISTRICT. THE EXPERIMENTAL, PIONEERING WORK HAS BEEN DONE. MAGNIFICENT CROPS OF ALFALFA, ALFALFA SEED, WHEAT, POTATOES, SUGAR BEETS, GARDEN TRUCK, BERRIES AND HARDY FRUITS CAN BE GROWN HERE AT SMALL COST. FREIGHT RATES TO THE GREATEST MARKETS IN THE WEST ARE LOW; RAILROAD FACILITIES EXCELLENT.
BERYL PUMPING DISTRICT LANDS ARE READY NOW FOR DEVELOPMENT AND CULTIVATION. THEY OFFER THE SAFEST AND SUREST LAND INVESTMENT IN THE WORLD TODAY.

These Lands Will Sell Fast

NEVER BEFORE HAVE THESE ENORMOUSLY PRODUCTIVE, SELF-WATERED, VIRGIN LANDS BEEN OFFERED TO THE PUBLIC. THEY WILL GO FAST. WRITE AT ONCE FOR INFORMATION. ARRANGE TO GO TO BERYL, OUR TOWNSITE, AND SEE OUR LAND. ACT TODAY.

THE BERYL LAND COMPANY

611 Grant Building

Los Angeles, California

N. B.—OUR REPRESENTATIVE WILL BE IN LAS VEGAS SATURDAY AND SUNDAY, JANUARY 19 AND 20. INQUIRE AT MARION HOTEL, NORTH MAIN STREET.