

Professional Card

C. D. BAKER
CIVIL ENGINEER
U. S. Mineral Surveyor
State Water Right Surveyor
11 Fremont, Las Vegas, Nev.

J. T. McWILLIAMS, C. E.
County Surveyor
State Water Right Surveyor
Land Reports and Surveys
Clark County - Moapa Valley
Maps
Hundreds of Other Detail
Desert Maps for Sale

WORK THAT PLEASURES
At
SANDERSON'S BARBER SHOP
A. PARVIN, Proprietor
Nevada Hotel Building

HUNTING'S AUTO LIVERY
9 Fremont St. Las Vegas, Nev.
TRANSFERS-STORAGE
TAXI SERVICE
Cars for Rent With or Without Drivers.

McNAMEE & McNAMEE
ATTORNEYS AT LAW
Office: 431 Pacific Electric Bldg., Los Angeles, Calif., and Las Vegas, Nevada

"WE MOVE THE EARTH"
Dump Truck for Rock and Gravel Hauling
LIGHT AND HEAVY TRUCKING
PHONES: OFFICE 147
Hunting Res. 130 Ball Res. 291
Cars and Trucks Operated "On Call" State Certificates. We Go Anywhere—Anytime

F. A. Stevens A. S. Henderson
STEVENS & HENDERSON
ATTORNEYS AT LAW
Las Vegas Nevada

DR. C. E. BULETTE
PHYSICIAN AND SURGEON
Rooms 6 and 7, Griffith Bldg.
Hours, 8:30-11:30; 2:00-4:00
Over Postoffice

A. W. HAM
ATTORNEY AT LAW
Mesquite Bldg.
LAS VEGAS NEVADA

LAS VEGAS HOSPITAL
Trained nurses are in constant attendance. Laboratory, X-Ray. Fully equipped to handle both Medical and Surgical Cases.
ROY W. MARTIN, M. D.
Physician and Surgeon
New Hospital Bldg., Second St.

E. F. DUPRAY
ATTORNEY AT LAW
Suite 17-19, Clark Bldg.
Las Vegas Nevada

PUBLIC STENOGRAPHER NOTARY
Available Day and Night
REAL ESTATE, RENTALS and INSURANCE
MARTHA S. CRUMP
315 Fremont St. Phone 125

CHAS. LEE HORSEY
ATTORNEY AT LAW
Suite 1-2, Clark Bldg.
Las Vegas Nevada

F. M. FERGUSON, M. D.
PHYSICIAN AND SURGEON
Las Vegas Hospital
Las Vegas, Nevada

I. S. THOMPSON
ATTORNEY AT LAW
Rooms 9 and 10, Griffith Bldg.
LAS VEGAS, NEVADA

Forest R. Mildren, M. D.
Specialist in Surgery
Obstetrics and Diseases of Women
LAS VEGAS HOSPITAL
LAS VEGAS, NEVADA

A. A. HINMAN
ATTORNEY and COUNSELOR
Suite 18-20 Clark Bldg.
Phone 22 Las Vegas, Nev.

Dr. R. R. MYERS
DENTIST
Hours 9 to 12-1 to 5
Park Bldg.—Occupying Offices with Dr. W. S. Park
Office Phone 145
Res. Hotel National

HARLEY A. HARMON
ATTORNEY AT LAW
LAS VEGAS NEVADA

C. D. BREEZE
ATTORNEY AT LAW
115 South Second St. Phone 8

DR. LILLIAN A. SMITH
Specialist on Chronic Diseases
CHIROPRACTOR
State License
407 Carson Street Phone 311

Dr. Z. A. d'AMOURS
Physician and Surgeon
A Graduate From Baltimore University
126 No. Second St. Phone 301

Fraternal Societies

Vegas Lodge No. 22, F. & A. M.
Stated Communications first Monday of each month at Masonic Hall at 7:30 p. m.
Special Communications, work requiring, as announced by the Executive Board, issued each month. Visiting brothers are welcome.
EARL F. DAVISON, W. M.
W. N. Schuyler, Secretary.

ATTENTION EAGLES!
Las Vegas Aerie No. 1213 Fraternal Order of Eagles meets in regular session the Second and Fourth Tuesdays of each month at 7:30 o'clock p. m., at Levy's Hall. All Stray Eagles cordially invited.

SOUTHGATE CHAPTER NO. 18
Order of the Eastern Star Meeting second and fourth Monday of each month at 7:30 p. m. at Masonic Hall. All visiting members cordially welcome.
MRS. GRACE NEWLIN, W. M.
MABEL R. ULLOM, Secretary

B. P. O. E.
Las Vegas Lodge No. 1468 Meets every Thursday evening at 7:30. Club rooms open from 11:00 a. m. to 12:00 a. m. Visiting brothers cordially welcomed.
G. V. T. GILBERT, E. R.
Wm. L. SCOTT, Secretary

LAS VEGAS POST NO. 3 OF THE AMERICAN LEGION
Regular meetings, 2nd and 4th Mondays of each month at Club House on Third Street, opposite the court house. Visiting members and ex-service men welcome. Club House open every evening.
C. D. FARRAR, Commander
LEONARD BLOOD, Adj.

CHARLESTON LODGE NO. 36
K. O. P.
Regular meetings first and third Tuesdays of each month at 7:30 p. m., at Beckley's Hall. Local members and visiting brothers are cordially invited.
JOHN GORDON, C. G.
JULIUS AHLSTROM, K. R. C.

A prediction has been made that soon dresses will be sold in the 8 and 10 cent stores. Considering the amount of material that goes in them now, it doesn't seem an unlikely development.

Artists Lodge No. 43 I. O. O. F.
Meets 1st and 3rd Wednesdays of each month at 7:30 P. M. Levy's Hall, Fremont St., between First and Second. Visiting brothers cordially welcomed.
A. D. HENNINGSEN, N. G.
DONALD BREMNER, Sec.

WASHINGTON, Jan. 7, (AP)—The comptroller of currency issued a call today for a statement of the condition of all national banks as of the close of business Monday, December 31.

MEXICAN HUNTS KIDNAPPERS WITH ORDER TO KILL

DOUGLAS, Ariz., Jan. 8, (AP)—A searching party headed by Francisco Fimbres, Sonora cattleman, left Agua Prieta, across the border, in an attempt to locate Fimbres' young son, kidnapped by a band of Apache Indians.

The asserted kidnapping took place nearly two years ago when the band of Indians killed Fimbres' wife. Fimbres has been commissioned by Governor Fausto Topete to capture or kill every member of the Apache band.

It is said that over ninety million dollars worth of toys were manufactured in the United States last year. And yet there are some people who say they don't believe in Santa Claus.

AUCTION!

The best and quickest medium for land and real estate turnover is through my Auction Sale way.

I will locate in Las Vegas shortly, and meanwhile want to hear from those interested.

RALPH COEN
Auctioneer
Room 407
Nat'l Bank of Commerce Bldg.
Los Angeles



Every delay, which means a day, in placing your order for the winter's supply of coal can mean a loss to you, because local dealers cannot control prices and a cost-at-mine advance means you must pay accordingly. Then too, delivery now means a good-first-grade coal at minimum cost, whereas rush delivery when winter storms and cold blow, may mean that you'll be glad to have inferior mining at any price.

Liberty Coal National Ice Co.
PHONE 75

The Salem News declares that if the communist element would do a little less parading with banners and a little more working with their hands to make communist experiments practical there would be more converts. All well and good. But the communist theory doesn't include any working with the hands by the communists.

NOTICE

Of Application for Permission to Appropriation of the Public Waters of the State of Nevada
Application No. 9688

Notice is hereby given that on the 6th day of September, 1928, in accordance with Section 59, Chapter 59, of the Statutes of Nevada, E. W. Griffith, of Las Vegas, County of Clark, State of Nevada, made application to the State Engineer of Nevada for permission to appropriate one-half of a second foot of the public waters of the State of Nevada. Diversion is to be made from Mary Jane Spring at a point in the NW 1/4 SW 1/4 Sec. 30, T. 19 S.; R. 57 E., M. D. B. & M., or at a point from which the 1/4 corner common to sections 25 and 30 of said township and range bears N. 84°30'W., 375 feet. Water will be stored in tunnel by means of a concrete dam, and conveyed by means of a pipe line to a tank located in the same subdivision as the point of diversion, and there used for watering 100 head of cattle, horses and deer, from January 1st to December 31st of each year.

Signed:
GEO. W. MALONE,
State Engineer.
Date of first publication Jan 1, 1929.
Date of last publication Jan. 29, 1929.

DOES CRIME PAY? WHICH PRINCE FELL OFF HORSE

In an article in the Baltimore Sun, James M. Hepbron disputes the statement that crime does not pay. "In that city (a typical American city) there were 10,000 serious crimes reported to the police," Mr. Hepbron says, "and in the final analysis only 97 people went to prison. If crime doesn't pay, who then gets the almost unthinkable sum of from ten to sixteen billions which is said to be the yearly toll of crime in this country, a sum which is one-seventh of our total earnings?"

Statistics such as these show graphically the force of American law enforcement. We have more laws than any other country in the world more professional reformers, more people with cures for everything that ails or is said to ail the human race. And crime has increased in direct proportion to the increase in laws enacted. It would hardly be an exaggeration to say that every piece of criminal legislation of the "freak" type, such as anti-pistol enactments and similar laws infringing on personal liberties, means a continually increasing number of law breakers.

Mr. Hepbron states that in Sing Sing, according to Warden Lawes of that penitentiary, "the average time between commitment to the death house and execution is almost a year. What a commentary on the American system of administering justice, in contrast to that of England, where from the time of trial, including every known appeal, only about six weeks elapse before execution."

A fact such as this requires no comment.

Henry Ford is quoted as saying that no successful boy ever saved money. What should he do with it, buy gasoline?

LONDON, Jan. 7, (AP)—It was officially stated at Buckingham Palace this morning that King George was having a somewhat more restful day. The Prince of Wales and the Duke of Gloucester hunted with hounds in Leicestershire.

LONDON, Jan. 7E, (AP)—A news dispatch from Melton, Mowbray says that the Duke of Gloucester's horse fell throwing the rider into a ditch. He was unharmed, however.

SEALED BIDS OR PROPOSALS for the construction of Cement Curb and Oil Bound Gravel Pavement for the City of Las Vegas, Clark County Nevada, will be received at the office of the Engineer for the City until 12 o'clock, noon, Wednesday, January 23, 1929.

The principal items and approximate quantities are as follows:
1496.25 linear feet of 18 inch Cement Curb.
2889.56 linear feet of 15 inch Cement Curb.

80821.24 square feet of Oil Bound Gravel Pavement, with appurtenant drainage substructures. Plans, specifications and all information may be obtained from the office of the Engineer. Specifications furnished gratis. Plans to be had on receipt of postoffice money order or certified check, payable to A. P. Slocum, to the amount of Nine Dollars.

Bids to be publicly opened at 3:00 P.M., Thursday, January 24, 1929, at City Commission Board Room, Court House, Las Vegas, Nevada.

A. P. SLOCUM,
Engineer for the City,
P. O. Box 952.
First Pub. Dec. 29, 1928.
Last Pub. Jan. 12, 1929, Each issue

NOTICE OF APPLICATION FOR UNITED STATES MINERAL PATENT

Serial Number 016983
Survey No. 4668
UNITED STATES LAND OFFICE

Carson City, Nevada, November 12, 1928.

Notice is hereby given that in pursuance of an Act of Congress approved May 10th, 1872, Charles Labbe, whose post office address is Death Valley Junction, California, has made application for a patent for fifteen hundred linear feet respectively on the Hillside and Westend lodes and fourteen hundred seventy-eight and three tenths linear feet on the Broadway lode and fourteen hundred ninety-nine and four tenths linear feet on the Doris A. L. lode, all situated in the Johnnie Mining District, Nye County, Nevada, and described by the Official Plat and Field Notes on file in the office of the Register of the Carson City Land District, Nevada, as follows:

HILLSIDE LODGE
Beginning at Cor. No. 1, from which U. S. L. M. No. 1A bears N. 33°55' E. 2992.8 ft. and running thence S. 10°03' W. 600.0 ft. to Cor. No. 2, thence N. 88°45' W. 988.8 ft. to Cor. No. 3, thence N. 88°15' W. 801.2 ft. to Cor. No. 4, thence N. 10°03' E. 600.0 ft. to Cor. No. 5, thence S. 88°15' E. 801.2 ft. to Cor. No. 6, thence S. 88°45' E. 698.8 ft. to Cor. No. 1, the place of beginning.

BROADWAY LODGE
Beginning at Cor. No. 1, from which U. S. L. M. No. 1A bears N. 27°05' E. 3466.4 ft. and running thence S. 10°03' W. 600.0 ft. to Cor. No. 2, thence N. 81°47' W. 768.0 ft. to Cor. No. 3, thence N. 88°58' W. 717.5 ft. to Cor. No. 4, thence N. 10°03' E. 596.0 ft. to Cor. No. 5, thence S. 88°15' E. 581.8 ft. to Cor. No. 6, thence S. 88°45' E. 894.3 ft. to Cor. No. 1, the place of beginning.

DORIS A. L. LODGE
Beginning at Cor. No. 1, from which U. S. L. M. No. 1A bears N. 14°15' E. 3856.0 ft. and running thence S. 9°02' W. 600.0 ft. to Cor. No. 2, thence N. 79°15' W. 1500.0 ft. to Cor. No. 3, thence N. 9°02' E. 489.3 ft. to Cor. No. 4, thence S. 81°47' E. 765.0 ft. to Cor. No. 5, thence S. 85°14' E. 736.5 ft. to Cor. No. 1, the place of beginning.

WESTEND LODGE
Beginning at Cor. No. 1, from which U. S. L. M. No. 1A bears N. 45°19'40" E. 4292.6 ft. and running thence S. 10°03' W. 596.0 ft. to Cor. No. 2, thence N. 88°33' W. 778.2 ft. to Cor. No. 3, thence S. 82°55' W. 724.3 ft. to Cor. No. 4, thence N. 10°03' E. 600.0 ft. to Cor. No. 5, thence N. 82°55' E. 724.3 ft. to Cor. No. 6, thence S. 88°15' E. 775.7 ft. to Cor. No. 1, the place of beginning.

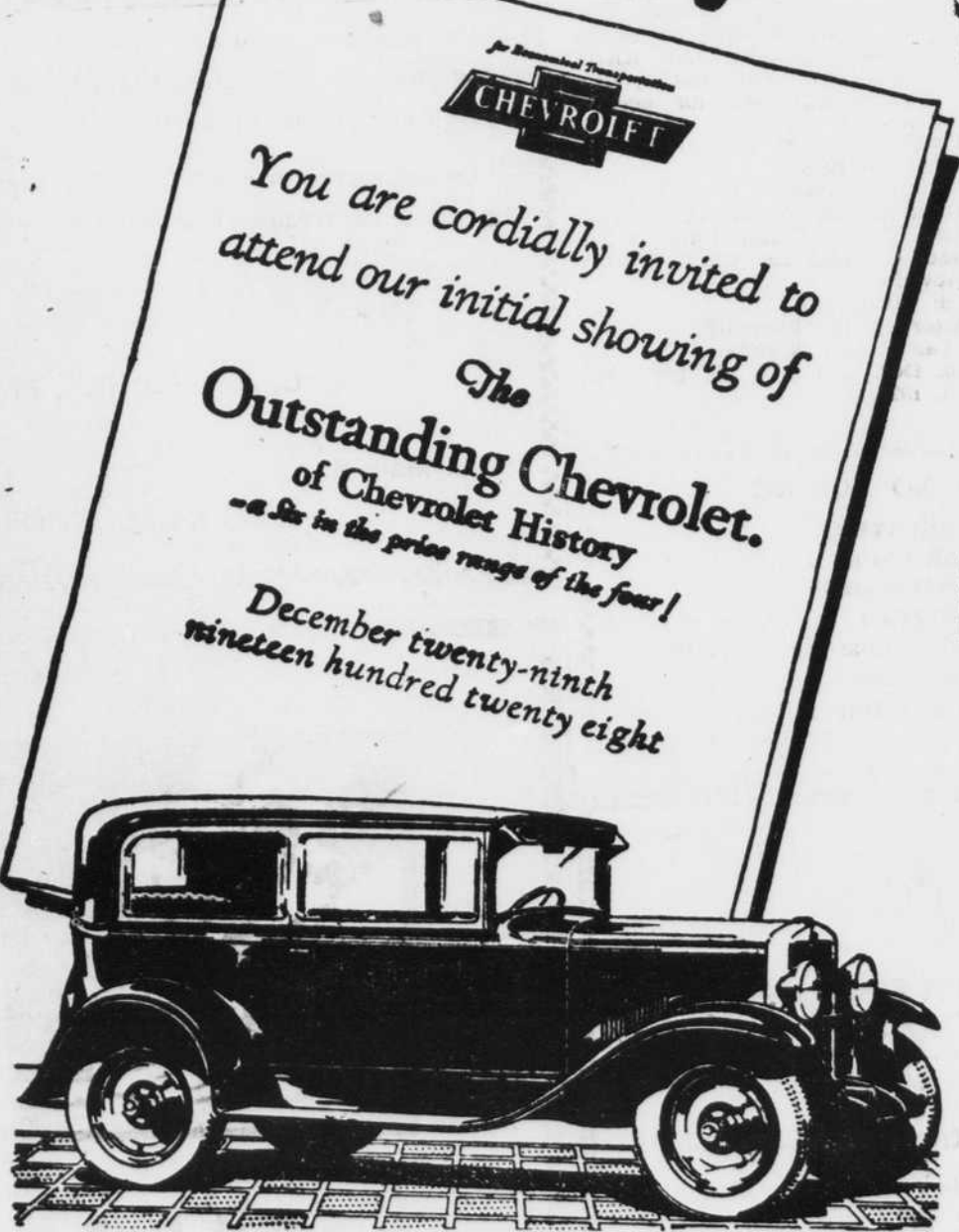
Total Area of the lodes as follows:
Hillside Lodge 20.478 Acres
Broadway Lodge 19.001 Acres
Doris A. L. Lodge 18.358 Acres
Westend Lodge 20.069 Acres
Total Area 77.906 Acres
Conflict Area with Survey No. 3799, Crown Point lode is 3.899 Acres

Which excluded from the total leaves net area 74.007 Acres
The adjoining claim is Crown Point.

The location certificates are recorded in the Office of County Recorder, Nye County Nevada, in Book 83, pages 498, 499, and 500. All adverse claims should be filed in this office during the sixty days period of publication.
CLARA M. CRISLER,
Register.

First pub. Nov. 15, 1928.
Last pub. Jan. 17, 1929. Each issue

Now on Display in our Showroom!



Today you can see the most sensational automobile ever introduced—The Outstanding Chevrolet of Chevrolet History, a Six in the price range of the four!

This new car is now on display in our showrooms and we cordially invite you to come in for a personal inspection!

When you lift the hood and see the new six-cylinder valve-in-head engine you will realize that a new era has dawned for the buyers of low-priced automobiles. Representing four years development and testing, this new power plant is a marvel of advanced design. It develops approximately 32% more power than any previous Chevrolet engine. It displays sensationaly greater speed and faster acceleration. And yet, despite this brilliantly improved performance, it maintains Chevrolet's worldwide reputation for economy—averaging better than twenty miles to the gallon of gasoline!

Great Array of New Features

Matching this spectacular advance in performance is the greatest array of new features Chevrolet has ever announced.

The new four-wheel brakes not only assure positive safety, but are exceedingly quiet in operation. The new two-beam, headlamps with foot control dimming device were never before available in Chevrolet's price class. And so on throughout the entire chassis, you will find feature after feature demanded in the finest automobiles and now offered on the Outstanding Chevrolet.

Distinctive New Beauty

But, however impressed you may be by the mechanical superiority of the Outstanding Chevrolet, your admiration will reach even greater heights when you study the car's distinctive beauty.

The marvelous new Fisher bodies represent a masterful example of artistic coachwork. Never in Fisher's long and illustrious service to the automotive industry has Fisher style supremacy been more clearly revealed!

The Roadster	\$525	The Sport Cabriolet	\$695
The Phaeton	\$525	The Convertible Landau	\$725
The Coach	\$595	Sedan Delivery	\$595
The Coupe	\$595	Light Delivery Chassis	\$400
The Sedan	\$675	1 1/2 Ton Chassis	\$545
		1 1/2 Ton Chassis with Cab	\$650

All prices f. o. b. Flint, Mich.

Come in and see these Beautiful New Cars on display in our showrooms .

J. WARREN WOODARD
DEALER
QUALITY AT LOW COST