

LAS VEGAS AGE

Las Vegas, Lincoln County, Nevada

T. G. NICKLIN, Proprietor
CHAS. C. CORRHILL, Local Manager

Published every Saturday and entered at Las Vegas Postoffice as mail matter of 1st second class.

Subscription Terms
One Year \$2.00
Six Months 1.00
One Month .25

NIPTON AND CRESCENT

Industrial and Mining News of Rich Section

BY N. A. KERN

Nipton, Cal., Oct. 10, 1908.

J. A. Burns is rushing work on the Lucy Gray shaft. It is down about 90 feet and has fine ore, some a cream or amethyst quartz, showing free gold in abundance, another part a honey-combed quartz, stained with iron and golden ochre, which also shows free gold frequently and pans freely. This is bound to be one of the great mines of Nevada, not only because of the regular richness but because of the extent, the blowout on the surface being over 200 by 300 feet, according to Mr. Burns and others. The surrounding country is quite completely staked.

L. T. Bright, who located the Lucy Gray, has bonded his group of claims on the west slope of the same mountain, but work has not yet been started upon them.

To the west of these claims J. E. Westlake has the Washington group, which shows the same big 200-foot dyke. Adjoining this on the west is the Franklin group, with the same dyke showing for 200 feet. As the surface here has all been eroded and the peculiar quartz quartz that is in the bottom of the Lucy Gray mine shows on the surface a magnificent prospect is presented. Dr. M. C. Hall, of Los Angeles, has recently of Bellardi, Cal., was struck with the showing while examining various prospect maps and bonded them for \$75,000. He is to begin work in Nov. 1st, and says that he is going to have the best and biggest mine in Nevada. O. T. Boren & Co. were the locators and owners of this group.

Three miles east of the Lucy Gray Bob Strain is doing some work on the Tacoma group for E. V. Preston of Seattle. Some wonderful ore has been found both on the Tacoma and the Crown Hill group owned by H. P. Kaler of Las Vegas, both of which are on the same mountain and southwest of the Lucy Gray. The Tacoma group is a very rich one and the location of the mine is very good. The quartz dyke shows on the surrounding country for 200 feet.

B. S. Wain and McKeon of Las Vegas, have located a group of claims and have staked the same. It is a very rich one.

Work is being done on various other locations, which make prospecting so much more than in other Nevada sections.

On the north and south dyke in the first range back in Lincoln county, W. C. Bright has sold his claim and is going to the group of claims on the west slope of the same mountain, but work has not yet been started upon them. The boys at Nipton, in hearing of the house and are looking for a prospecting party to locate the mine. Will W. C. B. be the one?

J. D. Bell and C. V. Bell have a number of the workings on this group and will build and operate a mine on the east, the best of which is a very rich one, producing from \$25 to \$50.

E. A. Carr has sold the Tacoma group showing that the Tacoma group is a very rich one and the location of the mine is very good.

W. H. Sherman of Crescent, has sold his Red Star claim, including the Nipton and Lucy Gray, to J. T. Scott, of the Big Dipper. The Big Dipper has a full set of workings in the subtrack here to the mine. Mr. Scott, who is a thorough mine and engineering man, is proceeding to develop this fine property and make a mining mine of it.

The Nipton Mining Co. has out on the additional men this week.

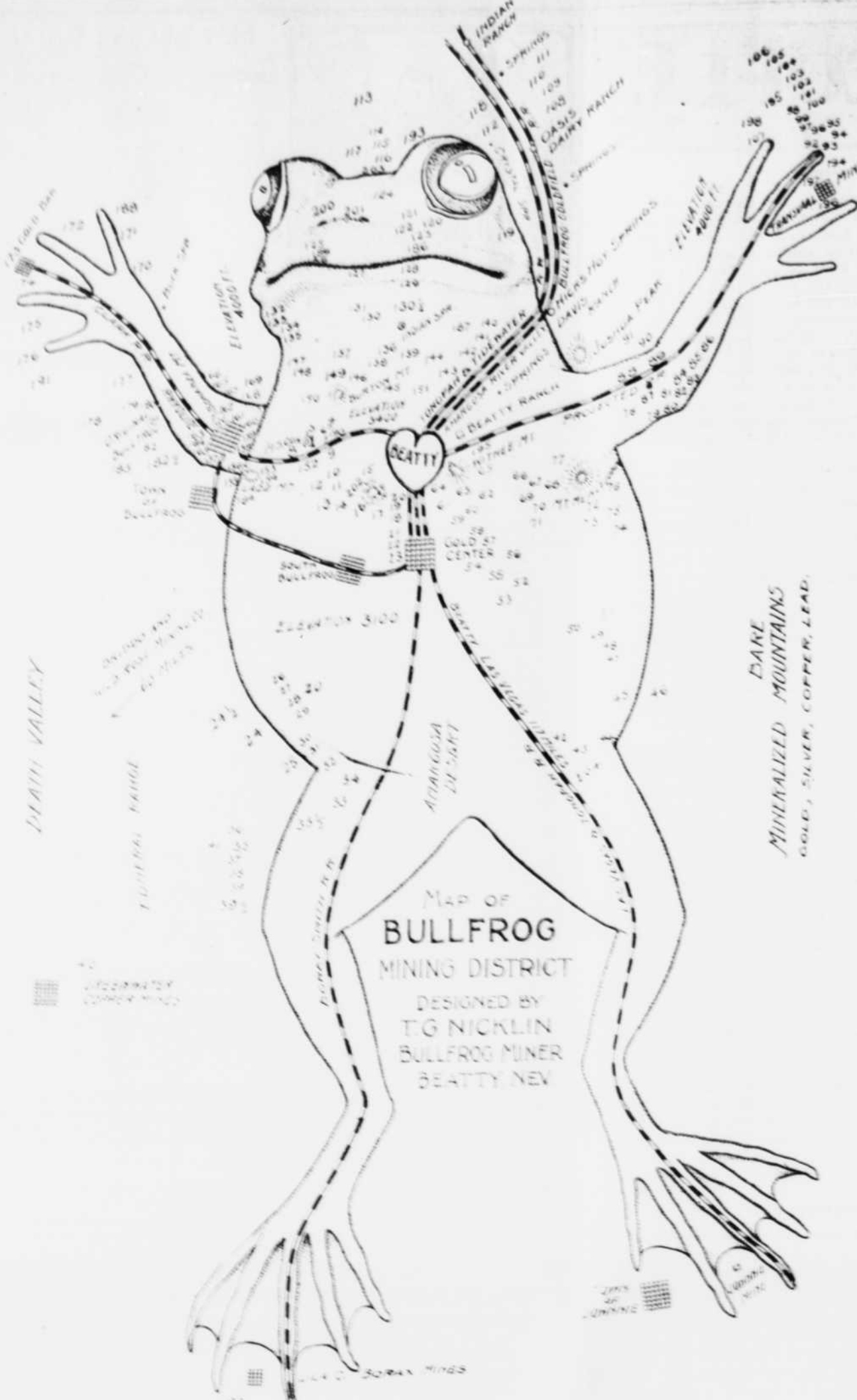
Frank Williams and Frank Franklin are staking on their Nevada group in Crescent Peak. They have about \$50,000 with a big crew.

Thought is being given to Nipton later than it can be had. Receipts last month were \$1,000. The Kinn Mountain Co. is having two sets of mining timber ordered today.

Jake Blumley has finished his contract to sink a working shaft on the Lucy Gray shaft to the 200-foot level and between the two big veins on the property. In sinking it out through a small blind end. He began running a 10x8 drift hole at the bottom of the shaft to cut the main vein, which is believed to be very close.

Three freight trains have left on the 12th to begin hauling ore from the Copper World, on Clark mountain, where they have an enormous tonnage on the dump, taken out during development work.

B. X. Dawson is erecting good frame



THE BULLFROG MAP

The figures on above map mark the location of mines and prospects. A copyright has been applied for and an index will be added when copyright is granted.

Good Springs
That energetic wholesale dealer in liquors, cigars, etc., J. O. McIntosh, of Las Vegas, reports Good Springs a thriving mining camp. He says there are five producing mines there, and that the Red Cloud is shipping out real gold bricks.

Wholesale Business
J. O. McIntosh Reaches Out From Las Vegas
Our enterprising wholesale and retail dealer in liquors, cigars, etc., has demonstrated that Las Vegas can sell supplies to the surrounding country. His goods today are shipped to the following towns and mining camps: Jean, Searchlight, Good Springs, Sandy, Potosi Mine, Pioche, Caliente, Moapa, Elginite, Beatty, Bullfrog, Gold Center, Gold Bar, Rose Well, Amargosa, Johnnie Siding, Town of Johnnie, Ash Meadows, Manse, Pahrump, in Nevada; Mineral, Nipton, Leavenworth, Greenwater, in California.

Searchlight All Right
"The camp without a failure," is in the searchlight with another publicity scheme. Next to rich gold mines a prize fight draws in Nevada. Read the following:
Searchlight is in line with Goldfield in having a championship pugilistic contest. Preparations are under way for matching either Burns and O'Brien or Britt and Gans for a finish fight about Christmas, at which date will be celebrated the completion of the railway to Searchlight.

Deep Tunnel
W. D. Lawton, of Gold Center, who is driving a tunnel in Bare mountain, was in Las Vegas Monday. The tunnel is 400 feet and will be continued over a mile. Some milling ore and several rich stringers have been found.

Las Vegas Also
Reno, Arizona, and Reno, Nevada, expect the railroads to establish common point railroad rates at said places soon. This means lower freight rates. Las Vegas is entitled to the same consideration from the Salt Lake.

Advertising Scheme
Goldfield mine operators have backed down in their demand that miners should change names before leaving the mines. Less enterprising adheres to the custom of workmen than at first supposed. It was a shrewd scheme to advertise the richness of Goldfield mines. The fight rages around the ore dump now.

Wholesale Business
J. O. McIntosh Reaches Out From Las Vegas
Our enterprising wholesale and retail dealer in liquors, cigars, etc., has demonstrated that Las Vegas can sell supplies to the surrounding country. His goods today are shipped to the following towns and mining camps: Jean, Searchlight, Good Springs, Sandy, Potosi Mine, Pioche, Caliente, Moapa, Elginite, Beatty, Bullfrog, Gold Center, Gold Bar, Rose Well, Amargosa, Johnnie Siding, Town of Johnnie, Ash Meadows, Manse, Pahrump, in Nevada; Mineral, Nipton, Leavenworth, Greenwater, in California.

Searchlight All Right
"The camp without a failure," is in the searchlight with another publicity scheme. Next to rich gold mines a prize fight draws in Nevada. Read the following:
Searchlight is in line with Goldfield in having a championship pugilistic contest. Preparations are under way for matching either Burns and O'Brien or Britt and Gans for a finish fight about Christmas, at which date will be celebrated the completion of the railway to Searchlight.

Deep Tunnel
W. D. Lawton, of Gold Center, who is driving a tunnel in Bare mountain, was in Las Vegas Monday. The tunnel is 400 feet and will be continued over a mile. Some milling ore and several rich stringers have been found.

Las Vegas Also
Reno, Arizona, and Reno, Nevada, expect the railroads to establish common point railroad rates at said places soon. This means lower freight rates. Las Vegas is entitled to the same consideration from the Salt Lake.

MOAPA NOTES
Mining and General Improvement on the Muddy
(Special Correspondence.)
Mr. C. M. Temple, the operator at this place, who has been east for over a month, has returned, and after spending a few days in Cedar Basin looking over his mining interests there, will again resume work for the railroad company.
Now that cooler weather has once more arrived, Cobb Bros. are preparing to open up the Lincoln group of copper claims. These claims were located last spring by Gentry and Baese, and after doing location work showed over 40 tons of high grade ore, assaying over 46 per cent copper, 20 ounces in silver and \$4 in gold.
The Grand Gulch Mining Co. want about eight or ten more men, miners and muckers. They have recently put on 25 men. The company are short of freighters and have raised the price for hauling \$1 per ton over price paid last year.
The nominees on the Republican State ticket gave Moapa and Lower Valley a call last week.
We have two tri-weekly stages from this place, one to Cedar City, Utah, via Sunkerville, and one to St. Thomas, via Logan and Ogden. The Government is also calling for bids for carrying mail from St. Thomas to Gold Butte (Cedar Basin).
The people here are in favor of moving the county seat, that is, if it will be located in the center of the county, viz., Moapa.
It is rumored that parties have taken options from settlers on all the lands in the upper valley of the Muddy.
About three sections of land in Meadow Valley Wash, adjacent to Moapa, have been filed on under the desert act, and parties are contemplating boring for artesian water.
Greenwater has six saloons. No change from thirst in that new copper camp.

Wholesale Business
J. O. McIntosh Reaches Out From Las Vegas
Our enterprising wholesale and retail dealer in liquors, cigars, etc., has demonstrated that Las Vegas can sell supplies to the surrounding country. His goods today are shipped to the following towns and mining camps: Jean, Searchlight, Good Springs, Sandy, Potosi Mine, Pioche, Caliente, Moapa, Elginite, Beatty, Bullfrog, Gold Center, Gold Bar, Rose Well, Amargosa, Johnnie Siding, Town of Johnnie, Ash Meadows, Manse, Pahrump, in Nevada; Mineral, Nipton, Leavenworth, Greenwater, in California.

Searchlight All Right
"The camp without a failure," is in the searchlight with another publicity scheme. Next to rich gold mines a prize fight draws in Nevada. Read the following:
Searchlight is in line with Goldfield in having a championship pugilistic contest. Preparations are under way for matching either Burns and O'Brien or Britt and Gans for a finish fight about Christmas, at which date will be celebrated the completion of the railway to Searchlight.

Deep Tunnel
W. D. Lawton, of Gold Center, who is driving a tunnel in Bare mountain, was in Las Vegas Monday. The tunnel is 400 feet and will be continued over a mile. Some milling ore and several rich stringers have been found.

Las Vegas Also
Reno, Arizona, and Reno, Nevada, expect the railroads to establish common point railroad rates at said places soon. This means lower freight rates. Las Vegas is entitled to the same consideration from the Salt Lake.

Desert Soil Fertile
That the soil of the great American desert is fertile and, with water, capable of producing abundant crops of the best fruits, vegetables and grain is evidenced by the success attained this season in raising peaches and apples at Indian Creek and garden truck at Beatty's ranch, Bullfrog district. Each of these places have plenty of water and farming has been profitable this summer, with results that are more than satisfactory. —Virginia City Enterprise.
Included in the above should be the Muddy and Virgin river valleys, Las Vegas valley, Pahrump valley, White's Manse ranch, Indian Creek and Colorado river valley.

Marble Quarry
About 12 miles northwest of Las Vegas, in the limestone mountain, Dr. H. L. Hewetson has located a marble quarry. President Perine, of the Colton Marble Company, located at Colton, Cal., has visited the quarry and pronounces the marble of first class quality. Men will be put to work on development immediately.

Las Vegas Business Directory

Las Vegas Trading Company
The Largest Stock of Building Material in Southern Nevada.

Red Cross Drug Store
Kendrick & Shannon, Druggists, Opp. P. O., Las Vegas, Nev.
A complete stock of Drugs, Medicines, Books and Stationery. All the latest Magazines and Periodicals.

Kramer & Schmiedman
Only First Class Barber Shop and Bath Rooms.
Opposite Postoffice, Fremont St., Las Vegas. Children's Haircutting, 35c.

Las Vegas Improvement Company
Lots in Clark's Las Vegas Townsite.
Investments now will bring sure profits.

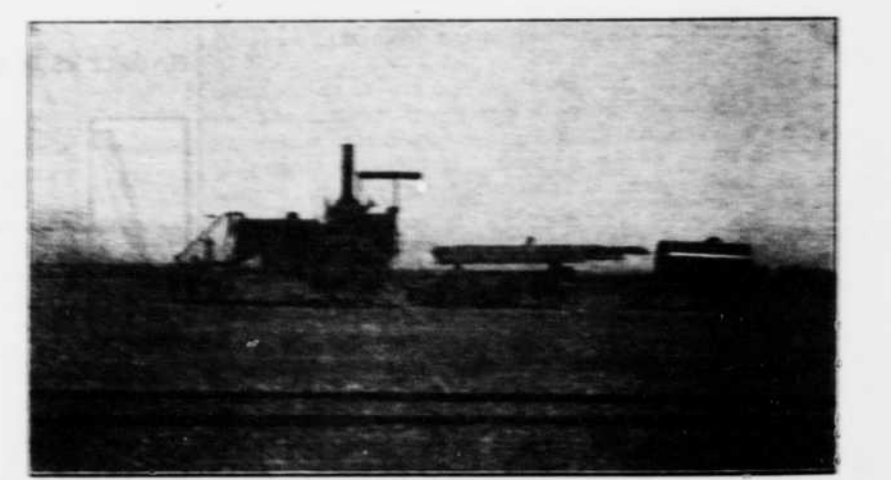
Portable Houses
For Rent or for sale by Las Vegas Trading Co.

Cement Blocks
The Ideal Building Material.
Manufactured by Las Vegas Trading Co.

Studebaker Wagons
"The Best in the World."
Las Vegas Trading Co.

Las Vegas Hardware & Plumbing Co.
W. D. WORRELL
First street, Las Vegas, Nevada.

C. Ganahl Lumber Company
A. W. Jarden, Manager.
Wholesale and Retail Lumber Dealers, corner First and Lewis streets.



TAKEN AWAY
An agent from Los Angeles has taken back the traction engine and wagons shown above, from the stone quarry west of Las Vegas.
The red and white sandstone has been used for building in Los Angeles and San Francisco, but is too far from the railroad. From the Salt Lake to the quarry is about 20 miles, and the haul is too expensive, in connection with the rail freight to the coast.
A good quality of sandstone exists north of Erie on the Salt Lake, 20 miles from Vegas.

Home Building and Loan Association
Las Vegas, Nevada.
A safe and profitable investment for monthly payments.

Painting and Paper Hanging
W. E. Summons, Practical Sign Painter.
Corner First and Ogden streets, Las Vegas, Nevada.

Las Vegas Mercantile Co.
Fresh and Dried Meats.
Wholesale and retail dealers in Hay and Grain. Las Vegas, Nevada.

Consolidated Power and Telephone Co.
We are now furnishing Electric Lights for Las Vegas.

UNITED STATES COMMISSIONER
Peter Buel, Las Vegas, Nevada.
Information given regarding Southern Nevada, Mines and Lands and possibilities for investment.

E. W. CLARK FORWARDING CO.
Hay, Grain and General Merchandise.
Freighting to Bullfrog a specialty. Las Vegas, Nevada.

HUBLER'S PRODUCE COMPANY
Fine Fruits and Vegetables, Always Fresh.
Fremont street, between First and Second. Las Vegas, Nevada.

GENTS' FURNISHING GOODS
Hamilton-Brown Shoes
L. W. BUCKLEY, Fremont St., Las Vegas.

ASSAYERS AND ANALYTICAL CHEMISTS
Smith & Hucker
Open for business every day. Las Vegas, Nevada.

ED. VON TOBEL LUMBER CO.
Dealers in Lumber and Building Material.
Head and Office, First St., 15, Blocks South of Postoffice. Las Vegas, Nevada.

The Gem Furniture Co.
W. L. Aglin, Proprietor.
Carries good line of Furniture, Bedding, Upholstery Ware, Glass Ware, Mirror supplies.
Corner Second street, Las Vegas, Nevada.