

# The Age

T. G. NICKLIN, Editor and Proprietor.

LAS VEGAS - - NEVADA

SUPPLEMENT

## MUDDY RIVER

### Progress in Agricultural and Allied Industries

[Special Correspondence]

Overton, Nevada, Feb. 19th, 1906.

LAS VEGAS AGE:—Our valley of the Muddy is putting on its green mantle. Cottonwoods are leaving out and fruit trees are blooming. Garden truck is growing fine. Onions, lettuce and spinach will be on the market in ten days; potatoes and peas are looking fine, grain and alfalfa are looking well.

We recently have had about ten days of cloudy weather, but very little rain. J. M. Lytle has gone out to Cedar Basin prospecting for a while.

Brig Whitmore has men working his mining claims located in the mountains about 30 miles north of this place. The prospect is very flattering.

Several men are out with their teams plowing, scraping and leveling the lands of the Experiment Farm preparatory to planting the various crops.

Sam. H. Wells has the contract for fencing the Experiment Farm.

The Nevada Land and Live Stock Co., who bought out Mr. Charles Coblesome time since, are selling their land in 40-acre lots, with 10 shares of water.

New comers who want to get lands and make homes in this country can do so for about \$20 per acre, prices varying according to the location and improvements.

W. C. Bowman has sold 380 acres with 100 shares of water, of what was the Thomas Osborn ranch, for about \$10,000, reserving 100 acres and 50 shares of water from the amount originally bought of Osborn.

Several men from Davis county, Utah, have come in and bought the C. H. Smith ranch and several 40-acre lots adjoining, and expect their families soon.

Quite a good many are going into the gardening business this summer, as from their little experience in that line last year it proved very profitable. All kinds of vegetables and fruits do very well in this country. We can cut five crops of alfalfa during the summer, can raise a good crop of corn after the wheat crop comes off, and if 50 or 100 families of the right kind of people come in, who have grit and staying qualities, we can become a prosperous community.

MUDDY.

### COPPER PROSPECT

Patsy Clark Jr. has gone to the Funeral Range to see his father's copper prospect. Patsy Clark Sr. acquired the property some time ago, but has only recently commenced extensive development. It has two ledges, each showing a width of about eight feet at a depth of 100 feet, and averaging 10 per cent copper.

This copper prospect is near the borax mine and will be tributary to the Tonopah & Tidewater railroad.

### WATER CRESS

Along the pure stream that flows from the big springs west of Las Vegas water cress grows luxuriantly. It is an odd fact that this water cress is allowed to go to waste while our people are clamoring for greens or importing interior stuff from California.

Call at The Age office for all sorts of mining blanks—location notices, certificates, etc. 25c per dozen.

# Las Vegas Business Directory

## Cement Blocks

The Ideal Building Material.

Manufactured by Las Vegas Trading Co.

## Red Cross Drug Store

Kendrick & Shannon, Druggists, Opp. P. O., Las Vegas, Nev.

A complete stock of Drugs, Medicines, Books and Stationery. All the latest Magazines and Periodicals.

## Portable Houses

For Rent or for sale by Las Vegas Trading Co.

## Painting and Paper Hanging

W. H. Sammons, Practical Sign Painter.

Corner First and Ogden streets, Las Vegas, Nevada.

## The Dixie Photo Co.

James J. Booth, Photographer.

Corner Fremont and Second streets.

## PIONEER PLANING MILL CO.

J. J. Ford, Manager.

Office: Fixtures, Wood Carving, Cement Moulds, Patterns for Brass and Iron Carvings. First street, Las Vegas, Nevada.

## CLAYSON & GRIFFITH

Hardware, Furniture, Outfitting, Undertaking.

"We deal in everything." Las Vegas, Nevada.

## Age and Miner



Every week henceforth Las Vegas Age and the Beatty Miner will issue an illustrated supplement, showing pictures of mines, scenes, business houses, industries and railroads in Southern Nevada.

It will pay you to subscribe for these papers and advertise in them.

Send \$1 to either of the addresses given below and learn something about Southern Nevada from the camera and reliable sources.

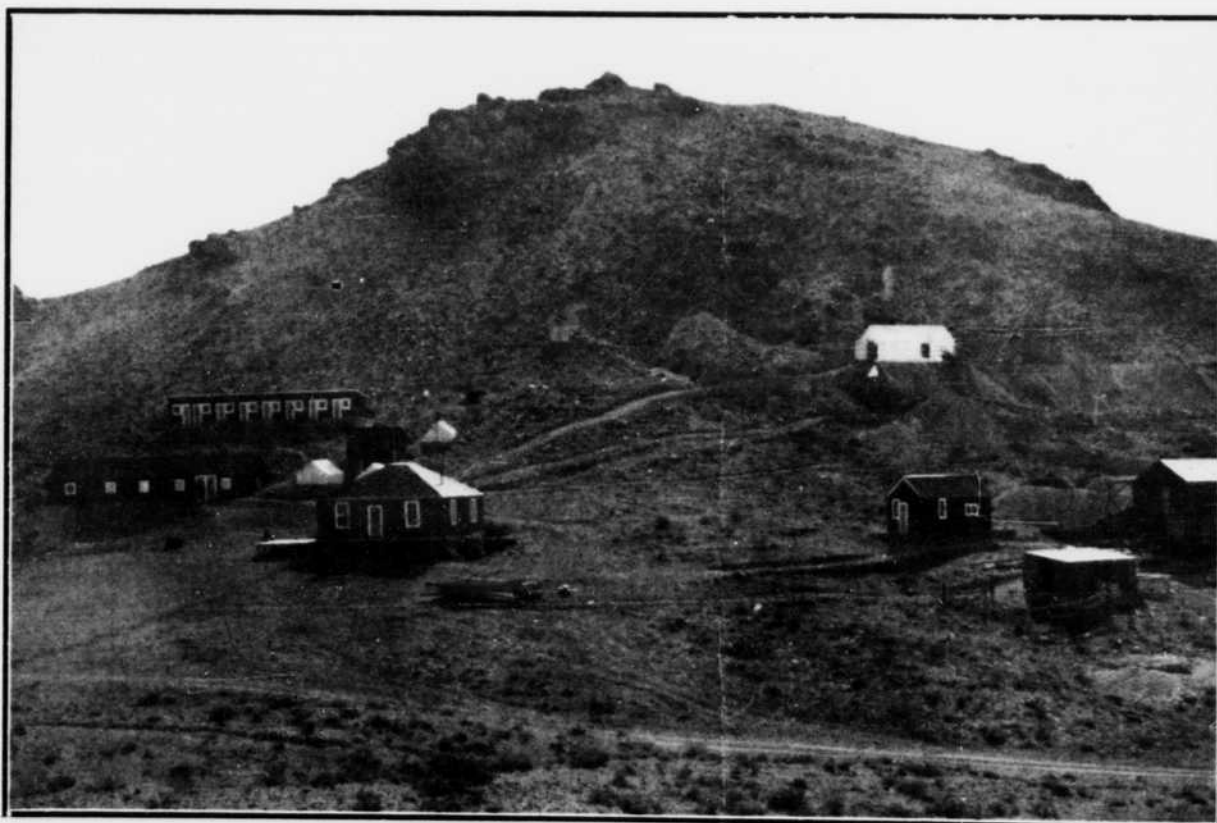
THE AGE.

Las Vegas, Nevada.

BULLFROG MINER.

Beatty, Nevada.

The Age Of Las Vegas, Nevada, sent to any address 6 months for \$1. Reliable news of Southern Nevada. \$1.00



## FAMOUS MONTGOMERY-SHOSHONE MINE, Near Beatty, Bullfrog District.

About one year ago the above mine was discovered by Bob Montgomery, who has developed it to a depth of 300 feet by freighting out the rich ore. Crosscuts have been run in every direction from the main shaft. Neither walls nor bottom of the ore deposit have been found in development, and God alone knows how much gold and silver it will yield. The ore runs from \$50 to \$300 per ton. A great mill and cyanide plant will be located at Beatty for the treatment of ore from the Shoshone and Polaris mines. The report seems to be well founded that Chas. M. Schwab has purchased 75 per cent of the Shoshone stock for \$5,000,000. It is the greatest mine in Nevada.

The mine will become a great producer when the railroad reaches Beatty.

## UNITED STATES COMMISSIONER

Peter Buol, Las Vegas, Nevada.

Information given regarding Southern Nevada, Mines and Lands, and possibilities for investment.

## E. W. CLARK FORWARDING CO.

Hay, Grain and General Merchandise.

Freighting to Bullfrog a specialty. Las Vegas, Nevada.

## THE GEM FURNITURE CO.

W. L. Aplin, Proprietor.

Carries a good line of Furniture, Bedding, Crockery Ware, Glass Ware, Miners' Supplies. Corner Second streets, Las Vegas, Nevada.

## ASSAYERS AND ANALYTICAL CHEMISTS

Smith & Hecker

Open for business every day. Las Vegas, Nevada.

## ARCHITECT

C. Chamberlain.

Office corner Bridger and First streets. Las Vegas, Nevada.

## THE MODEL GROCERY

M. C. Thomas, Proprietor.

"Always the Best." Second street, Las Vegas, Nevada.

## JOHNNIE MINES

There is increased activity in the Johnnie mining district, 40 miles northwest of Las Vegas. The approach of two railroads stimulates operations.

The old Chespe mine in the Johnnie district, with a remarkable reputation of production in the past, and now owned by the Congress Mining Company and principally by Jim Butler, Frank M. Ish, Harry Ramsey, George Bartlett and H. J. Bartlett, is now being worked under the management of John Ross. The main shaft has been straightened, retimbered and sunk to a depth of 230 feet. At this depth the vein, which is usually from 8 to 16 feet wide, is being proven with a crosscut, and when completed extensive drifting will commence. As development progresses the working force will be increased.