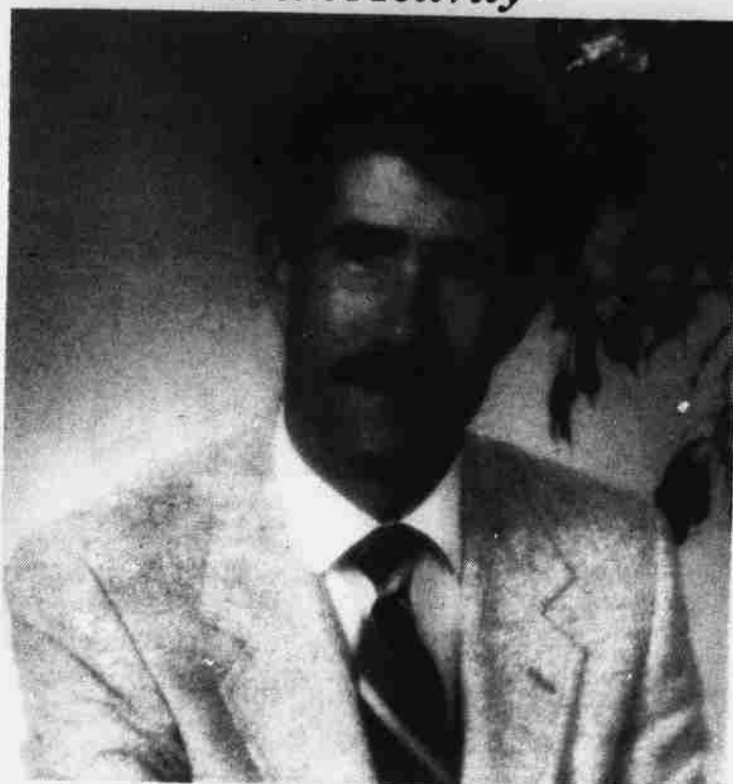


Temple Emanu-El Grows With Activity



By Temple President Robert S. Rosen, M.D.

How time flies! Thanksgiving is now behind us and it's that time of year again when we look back at what we did this past year, and look forward to what we can do better next year. We have accomplished many of our goals but there are still some things we have yet to accomplish.

The summer of 1989 was full of excitement for Temple Emanu-El members. To kick off the Annual Membership Drive a Pool Party and Barbecue was held to meet and greet new residents of Las Vegas, potential new members, and anyone interested in learning more about the synagogue. Families were invited to bring their children along when we took off for the hills in order to attend performances of "The Sound of Music" and "West Side Story" at Spring Mountain State Park. The Men's Club sponsored an eventful day at the ball park and Sisterhood presented a well attended make-up demon-

stration. Sisterhood was even busier this summer when they sponsored a surprise baby shower for Leslie Golbart, wife of our former Cantor Gary Golbart.

Rabbi Moshe M. Maggal joined Temple Emanu-El as the Temple's spiritual leader and on Sept. 22nd the Congregation moved into its new home at 7010 West Charleston Blvd. Temple Emanu-El prepared for the largest number of worshippers ever to attend High Holy Day Services. Each year, first time visitors and seasoned members alike marvel at the richness and breadth of our Rosh Hashanah and Yom Kippur services. A special Break-the-Fast, sponsored by Debra & Gary Hartmann in honor of their son Matthew's fourth birthday, followed the traditional blowing of the shofar.

The Congregation began to grow rapidly and membership is now at an all time high. On Oct. 20th, Mr. Norm Kaufman and members of the Jewish Federation of Las Vegas joined us for Shabbat services and presented the Congregation with both an American and Israeli flag, which are displayed in our Sanctuary. The New Year was underway with many new and exciting programs. Classes began on Oct. 31st and each Tuesday night members of the Congregation gather to review the Torah portion and discover new insights and ideas.

Members of the Congregation were very much in attendance at the baby naming ceremony of Courtney the Hebrew name "Miriam".

It was with great sadness that we accepted Cantor Golbart's resignation, so that he could accept a position with one of our Sister Temples, Cantor Golbart was with our Congregation for many years and added greatly to the beauty of our weekly Shabbat service. We wish him much success. Our Congregation took on a rather unique form after his departure, in that members of the Congregation are now honored by leading the service every other week when Rabbi Maggal is not officiating. I trust that this policy will help to promote a feeling of increased congregational involvement.

Much planning will finally come to fruition when Doreen R. Kramer becomes the first member to

become a Bas Mitzvah in our new building. It will be a pleasure to see our Sanctuary completely filled with worshippers for this joyous occasion.

Our tremendous growth and renewed activity is due primarily to the efforts and boundless energy of our new Temple Board. Our new building is a great source of pride for the growing Congregation. With so much happening, it is hard not to feel as though the Temple is an extension of our individual homes.

I want to thank all of you who have worked so hard for so long for keeping us strong and flourishing in Las Vegas. I know that there are other people who still have not found us, and it is our duty and responsibility to be there for them in the future, so that no Jew ever need be without the spiritual sustenance they need in their lives. We are stronger today than ever before. We are experiencing growing pains but change is necessary as we begin to serve a larger portion of the Las Vegas Jewish Community. Shabbat services are on Friday at 8 p.m. Join us and become a part of the Temple Emanu-El Congregational Family. For information, call the Temple office: 363-8161.

Temple Emanu-El

A Conservative Congregation on the West Side of Town

Rabbi Moshe M. Maggal &

the Board of Directors

invite you to worship with us at our new Temple located at 7010 W. Charleston Blvd.

(West of Rainbow)

363-8161

Shabbat Services-Friday - 8 PM

A Tradition of excellent service and delicious food.

Excellent service and delicious food are inseparable. The Palace Station Catering Staff is committed to making your next wedding reception, anniversary, reunion, or business meeting extraordinary—in the Palace Station tradition. Whatever the size of your group—from 25 to 800—contact us for delicious menu selections, affordable prices, and a staff who respects tradition. Call the Palace Station Catering Staff at 367-2401. Let our dedication to tradition enhance your next event.



WE TREAT YOU NICE 'N EASY!



PALACE STATION