

## Paul Fisher: A Friend Of Israel



Israel is a great nation of great people and America's most faithful ally because she needs our help, and we need hers. Many of her people have family, religious, social and economic ties with the people of our country. Israel's remarkable people have done amazing things with a small piece of desert land in spite of tremendous difficulties and odds against them. From the very beginning, her people have been threatened from all sides by fanatical enemies who have sworn to destroy her people. Her heroic people are now fighting for survival against overwhelming odds.

I am not an expert on Israel or the problems of Israel, but I do believe there is a common sense, scientific way to approach even the most dif-

ficult problems, and that objective scientific approach always offers the best opportunities for success.

Experience shows that life is always potentially a battle for survival. If the human race is to continue to progress, the battles need to be fair and our governments should provide justice for all people so that the best in the human race may prevail.

Gigantic, destructive wars between nations and acts of terror against innocent people must be brought under control and eliminated. This is no easy job in the Middle East, but it must be done, and I believe, there is a way if we realistically open our minds and our hearts to the need for justice for all people. If we do this conscientiously and honestly, I believe, God will help us find a better way to solve our most difficult problems. He will even help us bring peace and justice to the Middle East.

### Israeli Air Force Hits Terrorist Base

TEL AVIV (WNS) — For the second time in 24 hours, Israeli Air Force jets hit terrorist bases in south Lebanon. The sites attacked were near the town of Ba'albek in the Bekaa Valley. Another attack was carried out south of Sidon.

The Israel Defense Force spokesman reported that all planes in the second attack returned safely and the

pilots said they had scored direct hits on the bases. The targets were described by the IDF as the headquarters of Fatah terrorists loyal to PLO chief Yasir Arafat and of breakaway rebels backed by Syria and led by Saed Musa. The IDF said the structures served the organizations as bases from which to launch strikes against Israel.

### Israeli Inner Cabinet Approves Taba Proposals

TEL AVIV (WNS) — The 10-man Inner Cabinet met for nearly eight hours in two sessions, and announced in the evening that the government had accepted the proposals for resolution of the Taba question.

This includes the terms of the compromise as presented

by Avraham Tamir and David Kimche, Directors-General of the Prime Minister's Office and the Foreign Ministry, respectively.

Taba is a 25-acre piece of Sinai beachfront whose ownership is disputed by Israel and Egypt.

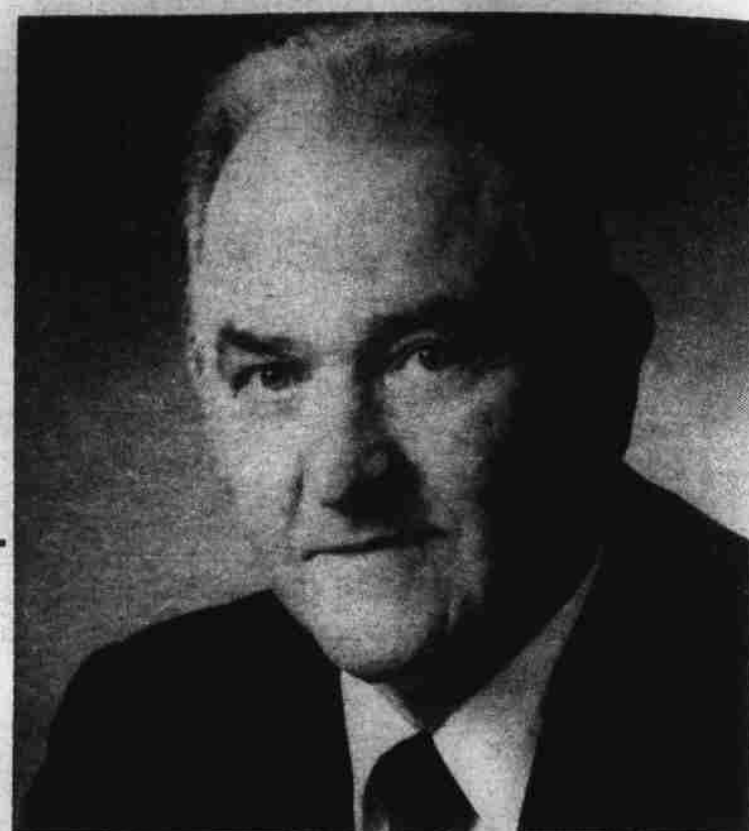
Kimche and Tamir had worked out the compromise terms in a meeting with an Egyptian negotiating team in Cairo, and had reportedly been unanimous in their report to the Inner Cabinet.

Premier Shimon Peres announced the Cabinet's agreement at a press conference following the marathon talks.

Eight of the ministers -- five each from Labor and Likud -- voted to accept the proposals. Only Ariel Sharon and Moshe Arens, both of Likud voted against.

Still to be decided are the names of the three international mediators who are to join an Israeli and an Egyptian representative, and acceptance of aerial photographs showing the border posts which Israel would claim should mark the border in the Taba area.

## Clarence H. Niebuhr Republican Candidate For Secretary Of State



Clarence grew up on a ranch in Mariposa County, California, and attended primary and secondary schools there. After graduation, he attended Bakersfield Junior College and subsequently Fresno State College. After graduating with an A.B. Degree in Biological and Physical Sciences, he changed his major to Education.

Clarence began teaching after completing double summer sessions, and while teaching, entered the Masters program in Education and Administration. From this program, he obtained the General Administration Credential, the required teaching credentials, and subsequently earned the Life Diploma in teaching during his teaching career.

In order to supplement a low salary base, he began to do carpentry and home additions on weekends and summer vacations. This business grew so fast, he soon secured a General Building Contractor's license. After ten years, in fairness to the children in his care, he decided to give up teaching and devote all his time to his construction company. The company soon became a leader in home additions and custom home building, earning many of the top building awards in the industry.

During a slowdown in building activity, he and his brother developed a mercury mine near the California-Nevada border, utilizing the mining experience and know-how learned from his father. After selling the mine, and on the advice and urging of a friend in mining, Clarence came to Nevada in 1969. As his first venture, he built a mill and wash plant on the Carson River to extract gold, silver, and mercury from the riverbed from Empire to Dayton. When the Supreme Court ruled that the state controlled the development of the Carson riverbed, mining operations ceased.

In the years since then, Clarence has developed several lode and placer operations. He returned to ranching after assisting several local corporations in promoting their businesses, and has spent a number of recent years in developing 2,000 acres in Fallon for the growing of alfalfa and for ranching. He is now working to develop additional mines in Nevada and Idaho. Clarence filed as a candidate for Secretary of State after reading an article in the Nevada Appeal lamenting the seeming apathy shown in the 1986 elections, specifically for the state offices. He felt his broad background and experience would be needed by the people and the government of the State of Nevada during the next four years.

Clarence would like to see more involvement from the Secretary of State's office in the area of business development, especially in attracting new business to the state. He feels the Secretary should have a much higher profile than is shown now or has been shown in the past, and be more active in working with other officers of the State.

