

Ground Is Broken For U.S. Holocaust Memorial Museum In Washington

WASHINGTON, D.C. — Ground was broken in Washington for the United States Holocaust Memorial Museum, which, in Elie Wiesel's words, "will be dedicated to the noble and urgent cause of remembrance" of the six million Jews and millions of others who suffered and died at the hands of the Nazis.

The Museum is being planned by the United States Holocaust Memorial Council, an independent Federal agency created for that purpose by Congress in 1980. Professor Wiesel, author and Holocaust survivor, is chairman of the Council.

The Museum, which will open in early 1989, is being built on Federal land with private funds, as required by law. The site is near the Mall and Washington Monument, and borders 14th and 15th Streets between Independence Avenue and C Street, S.W. Construction of the 300,000-square-foot facility began October 4.

Speakers at the 10 a.m. groundbreaking ceremony were Secretary of the Interior Donald P. Hodel, Senate Majority Leader Robert Dole and Council Chairman Wiesel.

After the speeches, there was a processional of the flags of the U.S. Army divisions involved in liberation 40 years ago. As the U.S. Army Band played, Professor Wiesel turned the first shovel of earth. The ceremony continued with the mixing of the American earth with the soil from five European concentration camps — Auschwitz, Bergen-Belsen, Dachau, Theresienstadt and Treblinka — and the Warsaw Jewish Cemetery. This was done to symbolize the link between the Museum and the places where millions died.

More than 400 attended the ceremony, including members of Congress and the Administration, Council members, Holocaust survivors and supporters of the Museum from around the country.

Planned as a living, American institution, the U.S. Holocaust Memorial Museum will integrate commemoration, remembrance and education. It will serve visitors of all ages and backgrounds.

The Museum will include a Hall of Remem-

brance, spaces for both permanent and changing exhibitions of artifacts and documents, an auditorium and a Research Pavilion. Information on many Holocaust topics will be available by computer to schools, universities and other Holocaust research centers worldwide.

In addition, the Museum will have a full schedule of public education programs, including lectures, film series, seminars and classes. It will serve regional and local Holocaust centers through its outreach program, to include lectures, teacher training, curriculum development and film series, as well as traveling exhibitions.

One hundred million dollars is needed to build, equip and endow the Museum. The volunteer-led U.S. Holocaust Memorial Museum Campaign, A Campaign to Remember, is raising the funds nationwide. To date, the Campaign has received more than \$21 million in gifts and pledges, with an additional \$15 million in sight. President Ronald Reagan is honorary chairman of the Campaign, which is co-chaired by Miles Lerman, a Vineland, N.J. businessman, and Sigmund Strochlitz, a businessman from New London, Conn. Both are survivors of the Holocaust.

The groundbreaking ceremony program contained these words from Elie Wiesel: "In this place, dedicated to the noble and urgent cause of remembrance, we pledge to tell as much as possible, as truthfully as possible...We shall tell the tale, not to divide people, but on the contrary to bring them closer together. We shall evoke past suffering, not to inflict more suffering, but, on the contrary, to diminish it. We shall remind of what took place in Auschwitz and Treblinka...not to humiliate anyone, but, on the contrary, to teach future generations, and our own...In this place we shall try to bear witness for the dead and the living."

Arab Move To Suspend Israel From UN Thwarted

UNITED NATIONS (WNS) — An Arab-sponsored move to suspend Israel from the General Assembly by denying its credentials was thwarted.

The Arab move came in the form of an amendment to a resolution stating that all member-states' credentials should be approved except Israel's. The amendment was co-sponsored by 18 Arab League members. Three Arab countries — Egypt, Jordan and Oman — did not co-sponsor it.

Woodbury Homes Near Phase I Sellout

Prospective home buyers have shown delight in the Village of Woodbury homes as nearly 90 per cent of Phase I is already sold out.

Lou Jacobs, vice president of Spirit of Nevada, Inc., builder-developer at Woodbury, noted that buyers are looking for more than just four walls for their money. They want the special amenities Woodbury has to offer, he said, including dramatic cathedral ceilings, impressive custom-designed fireplaces, elegant ceramic tile entries and solid oak accents.

Of the 58 homes in the first phase, nearly all have been sold out, Jacobs said, but there are still some good locations available. The opening of Phase II will offer buyers a chance to select their favorite floor plan and lot.

Security is a priority to Woodbury residents. The walled community on East Flamingo at Sandhill has a security gate for protection, only one entrance and exit and each home is wired for a security system.

Maintenance-free living is ideal for those who want to enjoy their free time. The lush greenery is professionally groomed and the cobbled courtyards are maintained by groundskeepers.

There are eight different floor plans to choose from at Woodbury. Four are patio homes and four are townhomes.

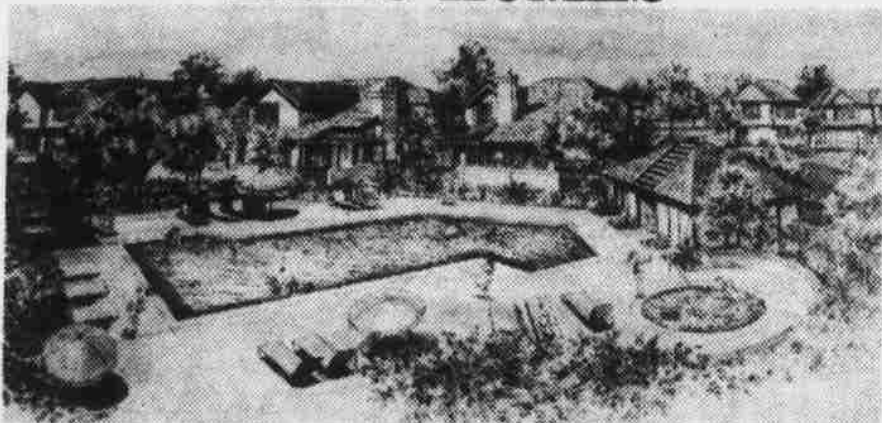
The French Tudor style homes were designed with luxury and elegance in mind. Priced from the low \$100s, these patio homes have mirrored wardrobe doors, formal oak bannisters, breakfast nooks, private entrances and rear covered patios. The versatile floor plans range from 1,547 square feet with two bedrooms and 2½ baths to 1,848 square feet with three bedrooms and 2½ baths.

The townhomes, designed in an English farmhouse style, are priced from the high \$70s and range from 1,050 square feet with two bedrooms and two baths to 1,444 square feet with three bedrooms and three baths. They feature plush carpeted baths and indoor laundry facilities along with the other Woodbury amenities.

And, Woodbury is also popular because it is close to everything — schools, libraries, restaurants, shopping, banks and businesses. Students can attend Chapparel High, Woodbury Junior High and George E. Harris Elementary schools, which are all within walking distance. A variety of pre-schools and day-care centers are also nearby.

Models are located at 4100 E. Flamingo Rd., and are open daily from 10 a.m. to dusk. For more information, please call 4351-1305 or 451-4812.

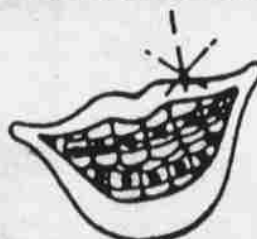
DISTINCTIVELY DESIGNED PATIO HOMES



Southern Nevada's ideal, maintenance-free, recreational lifestyle with pool, spa and tennis court! Choose from 2-story, 2 & 3 bedroom models with up to 3-baths. Features included in the price: ceramic tile entryways, vaulted ceilings, woodburning fireplaces, French Tudor architecture with rich wood trim and shake roofs with clay tile accents.



patio homes of
WOODBURY
WE INVITE YOU TO INDULGE YOURSELF



- AFFORDABLE BRACES IN MINIMAL TREATMENT TIME**
- NEVER A CONSULTATION FEE
 - NO MONEY DOWN O.A.C.
 - ADULTS & CHILDREN SAME LOW MON. FEE
 - ALL APPLICABLE INS. ACCEPTED

DONALD F. HOOPS, D.D.S.
ORTHODONTIST FOR ADULTS & CHILDREN
OVER 21 YEARS IN THE SAME LOCATION

2205 PARADISE RD.
JUST NORTH OF SAHARA
LAS VEGAS, NV. 89104
(702) 735-9527

LAUGHLIN, NV. 89029

OLDEST GUN SHOP IN NEVADA

THE GUNSMOKE SHOP

2528 E. Fremont Las Vegas, NV 89104

WEAPONS • NEW & OLD • BUY • SELL • TRADE
GUNS • AMMO • RELOADING • BLUEING
Swords—Bayonets—Parts—Repairs—Camo Clothing—Camping Equipment
—War Surplus

384-2747

384-7649

Jim

Rosemary

Lolly