

# ALL THE LUXURY YOU EXPECT IN A PRESTIGE AUTOMOBILE... PLUS MORE

LOOK AT WHAT YOU GET  
FOR THIS PRICE!

## 1985 LINCOLN TOWN CAR

- Power steering
- Power brakes: front disc/rear drum
- Speed control
- Tilt steering wheel
- Interval windshield wipers
- Power windows
- Power vent windows
- P215/70R15 WSW steel belted radial tires
- Air conditioner with automatic temperature control including automatic blower control
- Analog clock
- Mini spare tire
- Sedan door frames for luxury car quietness
- Cornering lamps
- Engine temperature gauge
- Automatic parking brakes release
- Heavy-duty battery (71 amp. hr)

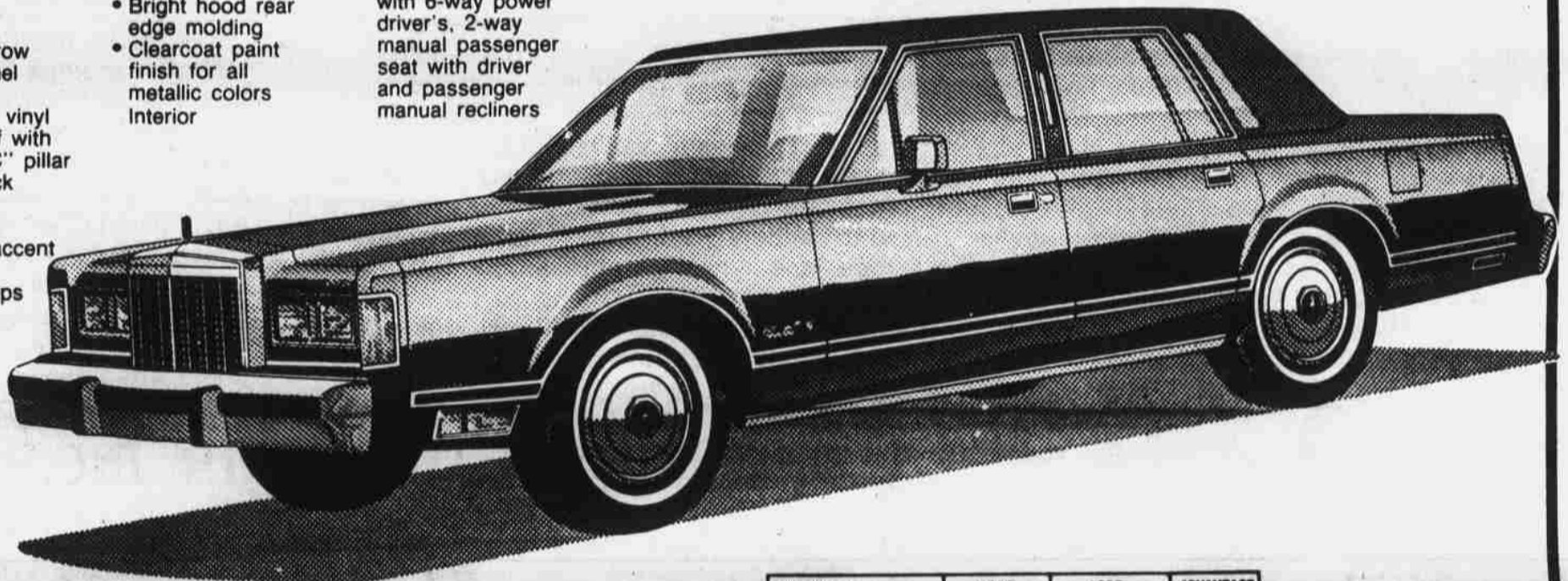
- LH and RH remote control mirrors
  - Remote control decklid release
  - Power door locks
  - Low oil level warning light
  - Single key entry/ignition
- Exterior
- Bright narrow rocker panel moldings
  - Full luxury vinyl Valino roof with padded "C" pillar
  - Decklid lock cover
  - Hood and bodyside accent stripes
  - Coach lamps
  - Full wheel covers

- Premium bodyside molding with color coordinated vinyl insert and integrated partial wheelip moldings
- Bright hood rear edge molding
- Clearcoat paint finish for all metallic colors interior

- Electronic AM/FM stereo search radio with four speakers and power antenna
- Twin comfort lounge seats with 6-way power driver's, 2-way manual passenger seat with driver and passenger manual recliners

- Radcliffe cloth seat trim
- Rear seat folding center armrest
- Rear compartment reading lamps

- Roof rail assist handles (4)
- Dual beam map/dome light
- Visor vanity mirror on passenger's side



### INCLUDING THE 36 MONTH/36,000 MILE LINCOLN COMMITMENT

<p><b>Where To Go For Warranty Service</b> Your selling Ford Motor Company dealer.</p> <p><b>Warranty Period Begins</b> On the date the vehicle is first delivered or put into use.</p> <p><b>Basic Coverage</b> Any repairs, replacements or adjustments to correct defects under normal use in factory materials or workmanship supplied by Ford.</p> <p><b>Coverage Period</b> 12 months or 12,000 miles, whichever occurs earlier. Ford radio or radio/tape components, mobile telephone and factory-installed air-conditioner, heater, defogger or de-icer systems — 12 months, regardless of mileage.</p>	<p><b>Corrosion Perforation Coverage</b> 36 months, regardless of mileage on any body sheet metal panel.</p> <p><b>Major Components Coverage</b> From 12 months or 12,000 miles through 36 months or 36,000 miles, with a \$50 deductible on each repair visit.</p> <p><b>No Charge</b> On warranty repairs, except as noted in major components coverage.</p> <p><b>Towing</b> Coverage to the nearest Ford Motor Company dealership.</p>
---	--

DIMENSION	1985 LINCOLN	1985 CADILLAC	ADVANTAGE LINCOLN
ENGINE	5.0L	4.1L	✓
FUEL CAPACITY	18 GAL.	18 GAL.	✓
WHEEL BASE	117.3	110.8	✓
O.A. LENGTH	219.0	195	✓
HEIGHT	55.9	55.0	✓
WIDTH	78.1	71.7	✓
CURB WEIGHT	4027	3396	✓
HEADROOM (F)	39.0	39.3	✓
HEADROOM (R)	38.2	38.1	✓
LEGGROOM (F)	43.5	42.4	✓
LEGGROOM (R)	42.1	40.6	✓
HIP ROOM (F)	56.5	54.2	✓
HIP ROOM (R)	57.8	53.7	✓
SHOULDER ROOM (F)	60.7	59.0	✓
SHOULDER ROOM (R)	60.7	59.3	✓
TIRES	P215/70R15	P205/75R14	✓
LUGGAGE CAPACITY	22.4	15.7	✓

Lease For Only **\$359** Mo. + Tax  
(48 Mo. Closed End Lease)

\*PLUS-An available ESP care service plan that even covers scheduled maintenance, brake pads and linings, spark plugs, engine belts and hoses, wiper blades, and shock absorbers, plus 10 DAY/\$200 RENTAL REIMBURSEMENT.

457-0321

PARTS DEPT NOW OPEN  
SATURDAY 9 AM 1 PM

**TOM COWARD**

LINCOLN  
MERCURY



MERCURY  
LINCOLN

3030 EAST SAHARA AVENUE / LAS VEGAS, NEVADA 89104