

ALL THE LUXURY YOU EXPECT IN A PRESTIGE AUTOMOBILE... PLUS MORE

LOOK AT WHAT YOU GET
FOR THIS PRICE!

1985 LINCOLN TOWN CAR

- Power steering
- Power brakes: front disc/rear drum
- Speed control
- Tilt steering wheel
- Interval windshield wipers
- Power windows
- Power vent windows
- P215/70R15 WSW steel belted radial tires
- Air conditioner with automatic temperature control including automatic blower control
- Analog clock
- Mini spare tire
- Sedan door frames for luxury car quietness
- Cornering lamps
- Engine temperature gauge
- Automatic parking brakes release
- Heavy-duty battery (71 amp. hr)

- LH and RH remote control mirrors
- Remote control decklid release
- Power door locks
- Low oil level warning light
- Single key entry/ignition

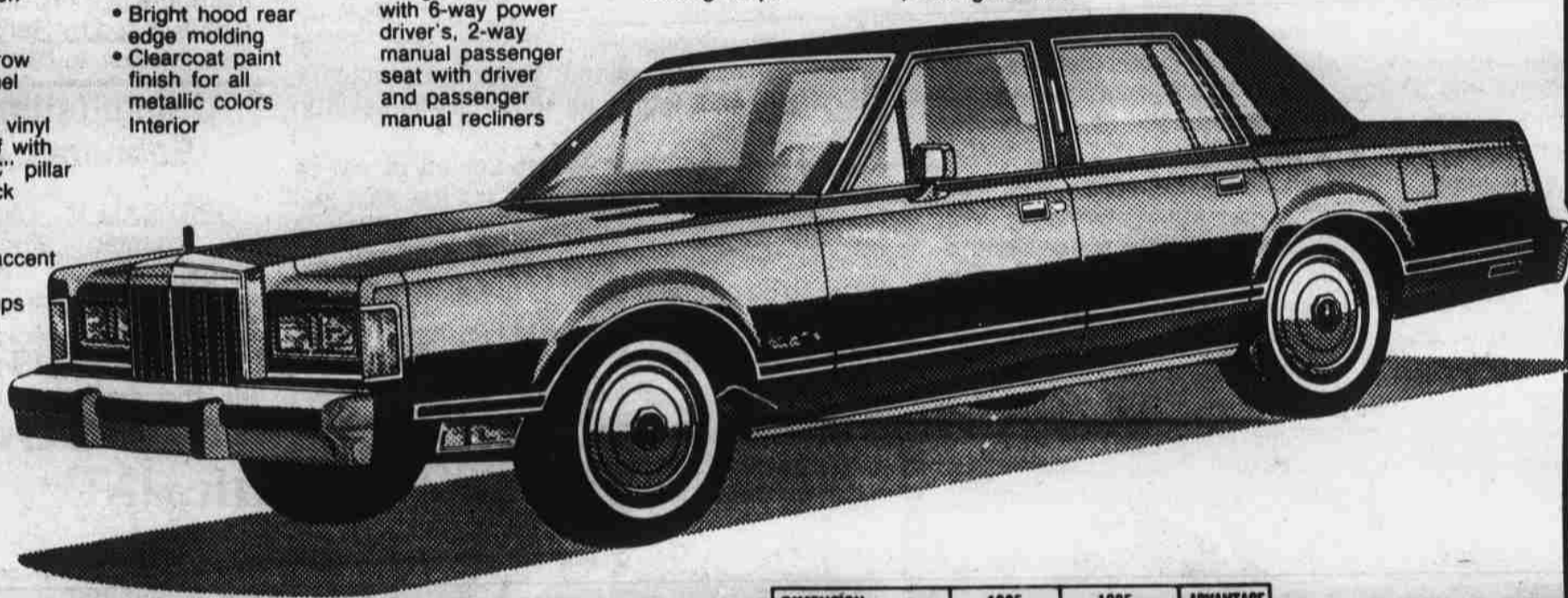
- Exterior**
- Bright narrow rocker panel moldings
 - Full luxury vinyl Valino roof with padded "C" pillar
 - Decklid lock cover
 - Hood and bodyside accent stripes
 - Coach lamps
 - Full wheel covers

- Premium bodyside molding with color coordinated vinyl insert and integrated partial wheelip moldings
- Bright hood rear edge molding
- Clearcoat paint finish for all metallic colors interior

- Electronic AM/FM stereo search radio with four speakers and power antenna
- Twin comfort lounge seats with 6-way power driver's, 2-way manual passenger seat with driver and passenger manual recliners

- Radcliffe cloth seat trim
- Rear seat folding center armrest
- Rear compartment reading lamps

- Roof rail assist handles (4)
- Dual beam map/dome light
- Visor vanity mirror on passenger's side



INCLUDING THE 36 MONTH/36,000 MILE LINCOLN COMMITMENT

| | |
|---|--|
| <p>Where To Go For Warranty Service Your selling Ford Motor Company dealer.</p> <p>Warranty Period Begins On the date the vehicle is first delivered or put into use.</p> <p>Basic Coverage Any repairs, replacements or adjustments to correct defects under normal use in factory materials or workmanship supplied by Ford.</p> <p>Coverage Period 12 months or 12,000 miles, whichever occurs earlier. Ford radio or radio/tape components, mobile telephone and factory-installed air-conditioner, heater, defogger or de-icer systems — 12 months, regardless of mileage.</p> | <p>Corrosion Perforation Coverage 36 months, regardless of mileage on any body sheet metal panel.</p> <p>Major Components Coverage From 12 months or 12,000 miles through 36 months or 36,000 miles, with a \$50 deductible on each repair visit.</p> <p>No Charge On warranty repairs, except as noted in major components coverage.</p> <p>Towing Coverage to the nearest Ford Motor Company dealership.</p> |
|---|--|

| DIMENSION | 1985 LINCOLN | 1985 CADILLAC | ADVANTAGE LINCOLN |
|-------------------|--------------|---------------|-------------------|
| ENGINE | 5.0L | 4.1L | ✓ |
| FUEL CAPACITY | 18 GAL. | 18 GAL. | ✓ |
| WHEEL BASE | 117.3 | 110.8 | ✓ |
| O.A. LENGTH | 219.0 | 195 | ✓ |
| HEIGHT | 55.9 | 55.0 | ✓ |
| WIDTH | 78.1 | 71.7 | ✓ |
| CURB WEIGHT | 4027 | 3396 | ✓ |
| HEADROOM (F) | 39.0 | 39.3 | ✓ |
| HEADROOM (R) | 38.2 | 38.1 | ✓ |
| LEGROOM (F) | 43.5 | 42.4 | ✓ |
| LEGROOM (R) | 42.1 | 40.6 | ✓ |
| HIP ROOM (F) | 56.5 | 54.2 | ✓ |
| HIP ROOM (R) | 57.8 | 53.7 | ✓ |
| SHOULDER ROOM (F) | 60.7 | 59.0 | ✓ |
| SHOULDER ROOM (R) | 60.7 | 59.3 | ✓ |
| TIRES | P215/70R15 | P205/75R14 | ✓ |
| LUGGAGE CAPACITY | 22.4 | 15.7 | ✓ |

Lease For Only **\$359** Mo. + Tax (48 Mo. Closed End Lease)

*PLUS-An available ESP care service plan that even covers scheduled maintenance, brake pads and linings, spark plugs, engine belts and hoses, wiper blades, and shock absorbers, plus 10 DAY/\$200 RENTAL REIMBURSEMENT.

457-0321

PARTS DEPT NOW OPEN
SATURDAY 9 AM 1 PM

TOM COWARD

LINCOLN
MERCURY



MERCURY

LINCOLN

3030 EAST SAHARA AVENUE / LAS VEGAS, NEVADA 89104