

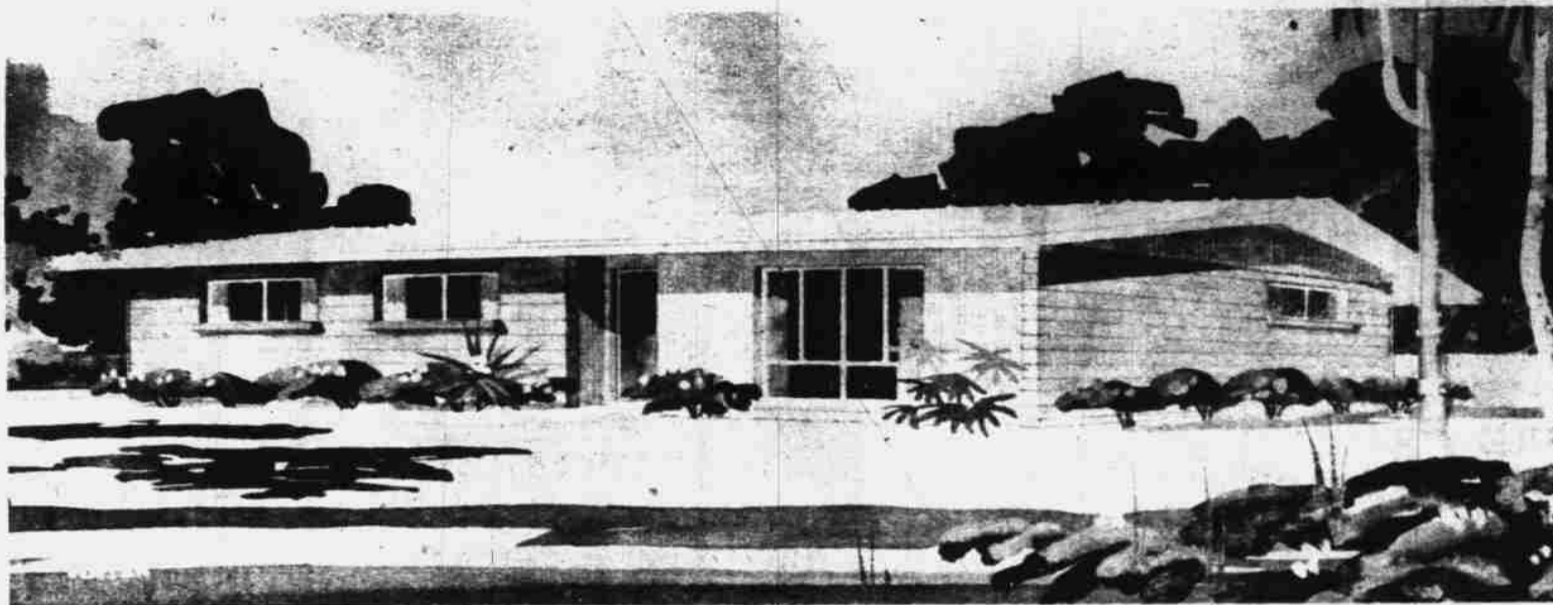
DESERT HILLS HOMES

731-1006

NO MONEY
TO ANYONE . . . VET

PAYMENTS RANGE FROM \$114.00 PER MONTH, INC

PRICES START AT



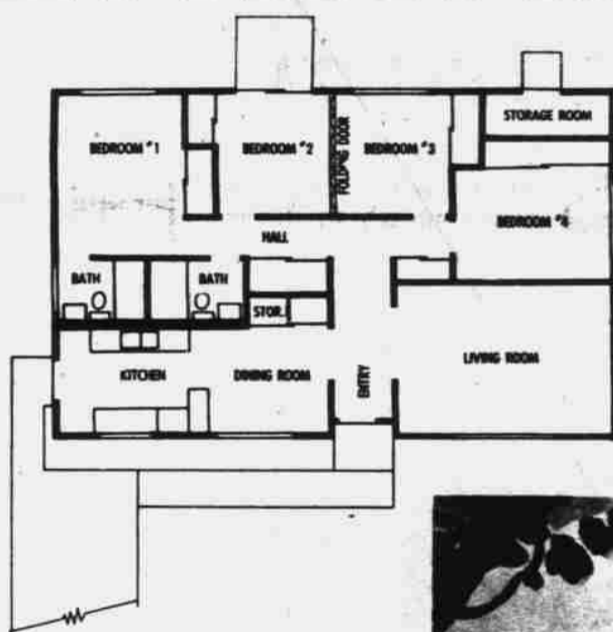
Desert Hills is a master-planned community designed to offer families the finest living conditions anywhere at moderate prices. The modern development is a "city within a city" to keep pace with the continual rapid expansion of prosperous Southern Nevada. Desert Hills is master-planned to provide residents with conveniences of a large shopping center, bus service, churches and schools. As one of the fastest growing communities in the area, the subdivision is an outstanding example of suburban living in homes built of quality materials by the most outstanding craftsmen in the building industry. Each Desert Hills home is representative of the symbol of the National Association of Home Builders of the United States — the mark of quality and ethical practice in the building field. "Master Built By Maslow" is your warranty and guarantee that you have purchased the finest home possible for the price — a home constructed with the very best materials and magnificent craftsmanship by an award winning builder.

THE THUNDERBIRD

\$17,500

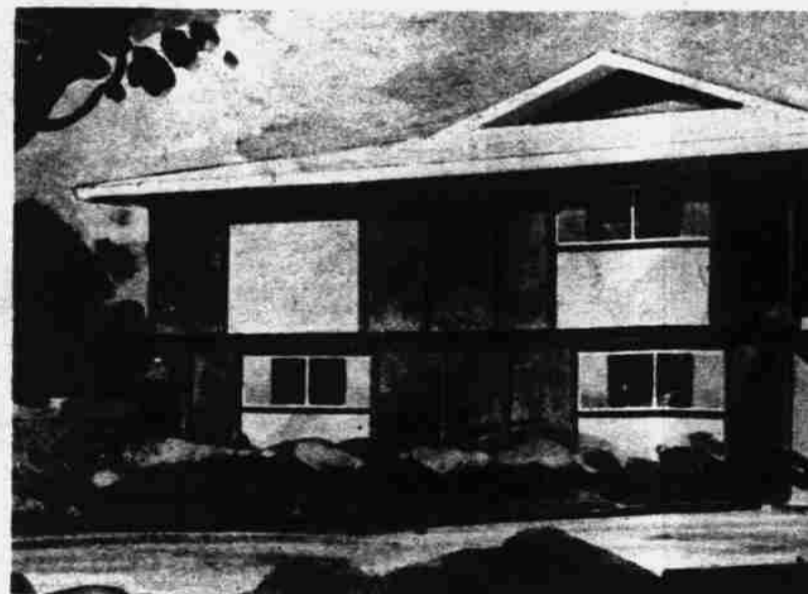
**4 BEDROOMS
2 BATHS**

A home built with the mark of quality throughout. Award winning features in style, quality and design in the tradition of "Master Built by Maslow." A home designed for family living with flexibility built-in for any size family. A lot of home for a little money.



THE FEATURES

- LIFETIME MASONRY CONSTRUCTION
- BALANCED POWER
- GAFF PAC ALL YEAR AIR CONDITIONING*
- 2, 3 & 4 BEDROOMS
- 1 BATH, 1 & 3/4 BATHS
- BALANCED POWER LIVING
- GAFFERS & SATTLER RANGE
- LARGE DINING AREA
- BREAKFAST BAR
- LUXURIOUS LIVING ROOM
- KING-SIZE MASTER BEDROOM
- COLORED BATHROOM FIXTURES
- TILED FLOORS
- CENTRAL ENTRY HALLS
- SLIDING GLASS DOORS
- EXTRA LARGE CLOSETS
- EXTERIOR STORAGE & UTILITY AREA
- CHOICE OF DECORATOR BLENDED COLORS
- TRI-LEVEL, FLEXIBLE AREA LIVING
- SPLIT LEVEL, BONUS ROOM LIVING



CAESAR'S PA

5 BEDROOMS 3 BATHS

DESERT HILL

BOULDER HIGHWAY and N

731-1006

*NOT A HEAT PUMP