

Commentary

Buckle those seatbelts

Welcome back, my loyal sport fans, to the bench, where nobody leaves sad, and happy sports dreams come true (cue the chee-sey, Disney-style music)...

Off the Bench

MICHAEL MELISSA

I didn't know the Thomas & Mack built a new roller coaster ride inside the arena. I even gave it a ride a few times during the break. If you're ever in the house that Tark built be sure to jump on it. The name: Mr. Bayno's Wild Runnin' Rebel Basketball Ride...

I've decided to use money from my own pocket (and my writers call me cheap) and buy the entire basketball team a season's worth of Dramamine. Why? With all the ups, and all the downs of this season, just watching them can make you seasick. I can't imagine how it must be on the court...

The Runnin' Rebels have faced three teams who were in first place in the Big West when they entered the T&M, and left in second place after the game. Hey guys, did you know that all of your upcoming opponents, including New Mexico State and Reno are also in first place? That's right, don't believe those people who told you they were the cellar-dwellers of the BWC, they're both in first. Trust me...

Straight from the Quote Department here at *The Rebel Yell* (your tuition dollars at work): "Things will turn around, just keep your heads up and things will turn. The fans are great here and they will help you all to turn this around." From former Rebel great, Larry Johnson, in his retirement speech to a packed house at the T&M...

It must have been costume night at the T&M that night, since many of the fans were dressed like vacant seats...

The Rebels did turn something that night, when they played Charleston Southern, as they TURNED the ball over 21 times...

Boy, I'll tell you what, I was praying hard for 'ol LJ and Stacey Augmon to suit up for the game...

From the bench math department (once again your tuition dollars at work): Pacific beat the Rebels by 20 back on January 8, 88-68, at the T&M. With our expert

See seatbelt, pg. 14

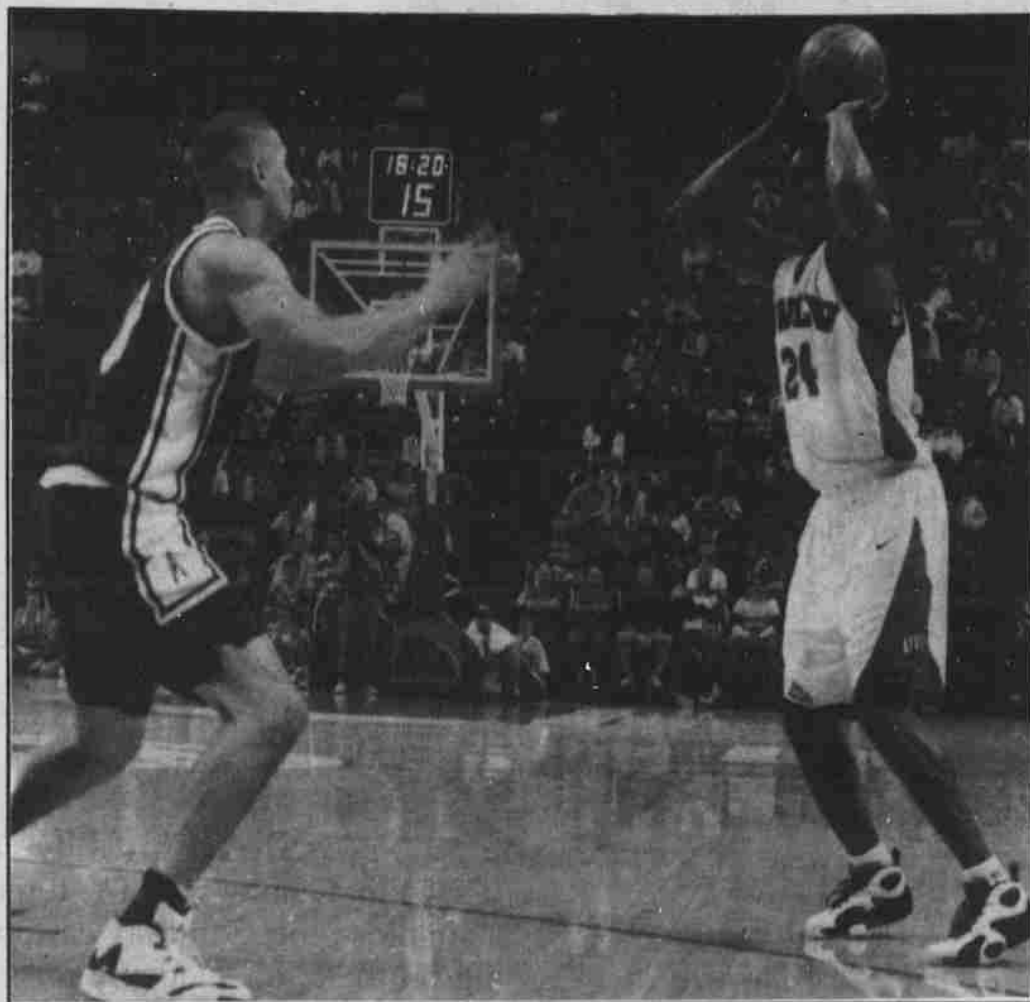


PHOTO BY HYUN-HO HAN

No. 24, Clayton Johnson, sets up for a 3-pointer against Charleston Southern University. The Runnin' Rebels fell to CSU, 63-55. They were 5-8 during the break.

The wait for 300 continues

Bolla still looking for magical win

BY JEREMY MARTIN
SPORTS STAFF WRITER

Lady Rebel Coach Jim Bolla will have to wait until Saturday's game against New Mexico State to go for his 300th career win.

UNLV blew an early 18-9 lead Sunday and lost its third straight to Big West Conference rival University of California-Irvine, 84-62.

The Lady Rebels dropped to 3-11 with a 2-5 BWC record.

The key to the loss was a 21-4 Irvine run at the end of the first half, which saw the Lady Rebels go into the locker room down 30-24.

"I can't explain it," a distraught and frustrated Bolla said. "We are up 11 and we don't play. This is the third game our post didn't show up to play."

The first-half Irvine run included five easy layups with Lady Rebel defenders nowhere to be found.

Turnovers have plagued UNLV all season long and Sunday was no different. The Lady Rebels committed 25 turnovers which lead to some easy Irvine scores. A series of bad passes and an aggressive Irvine defense accounted for the give-aways.

"I can coach up all the Xs and Os in the world but they have to make the decision that they want to play hard and get it done. We have some people who are not playing hard," Bolla said. "It boggles my mind that people that talented are satisfied with being mediocre."

Bolla cites players that are not realizing their role on the team as the reason for the lackluster season.

"You play to your strengths

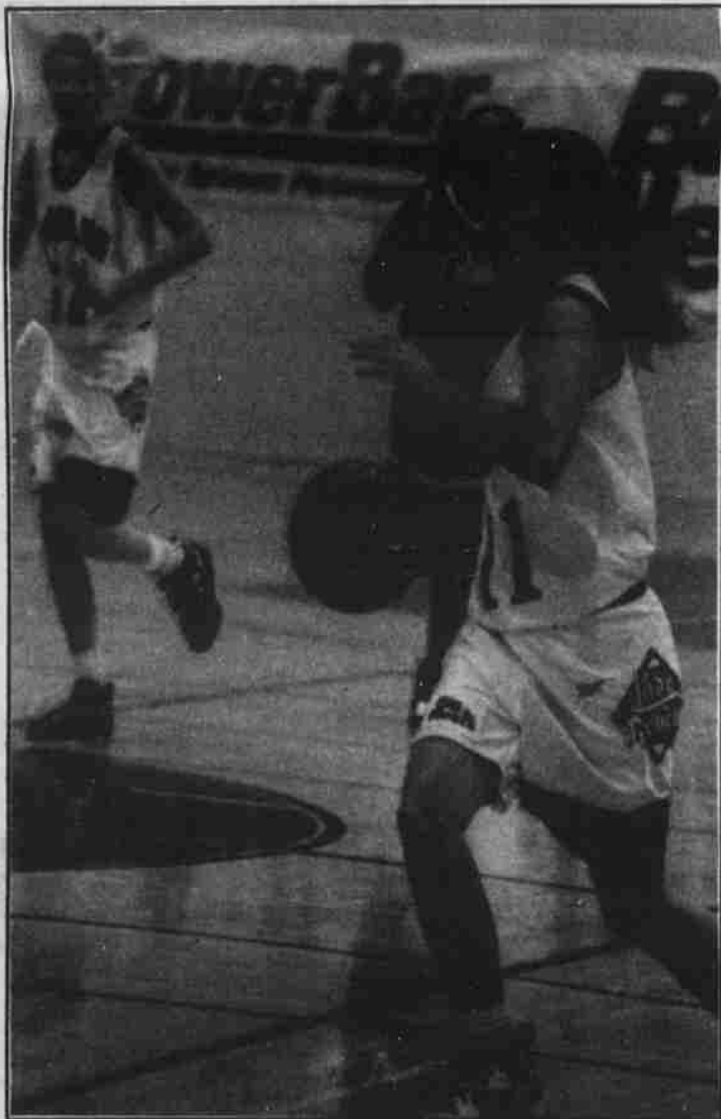


PHOTO BY MIKE LACY

Desiree Weimann (11) charges up court in Friday's loss.

and stay away from your weaknesses. We have some players who just don't understand what their weaknesses are."

UNLV was without two of its most talented players Sunday. Junior guard Elana Adams is academically ineligible and will be lost for the season. Sophomore center Nakia Jones, who just regained her eligibility at the semester break, has been suspended by Bolla indefinitely for lack of a strong work ethic.

"When you loose someone like Adams who has been averaging over 20 points in the

last five or six games, it hurts tremendously," Bolla said. "(Jones) has as much talent as anyone on the team but she is not willing to work hard. I am not going to reward someone who is not willing to work hard by giving them the privilege to play in the game. When she starts to work hard she can rejoin the team."

Junior guard Loreissa Randle led UNLV with 18 points.

The Irvine loss was typical of the Lady Rebel's season. UNLV started off the season

See Bolla, pg. 14

\$2 mil needed for equity

BY MICHAEL MELISSA
SPORTS EDITOR

In a workshop discussion Jan. 12, UNLV President Carol Harter told the Board of Regents that the athletic department will need an additional \$2.37 million to meet the NCAA's gender equity guidelines.

UNLV women's athletics will need the funds to cover scholarships (\$759,661), operating costs associated with each program (\$764,694) and salaries (\$846,958), which all go towards a certification process that begins in 1998.

Although approximately \$400,000 has already been budgeted for the new women's volleyball program, which starts in the fall of 1996, UNLV will still fall short of the equity guidelines. The guidelines are based on matching available athletic scholarships in relation to the number of men-to-women in the full-time student body.

Shan McDonald, who coaches for women's softball, believes there are still obvious differences between the two sides.

"The facilities for baseball vs. softball are different, even though the teams play at about the same level," said McDonald. "Basketball is obvious, with the women playing in the south gym. Plus weight room time is not equal for the sports; yet some things are changing."

With the addition of the women's volleyball team, along with new women's facilities in the Lied Athletic Complex, Harter believes this has shown signs of a good effort to become certified. UNLV should also be able to handle the cost with better fund raising for the women's athletic programs and the additional revenue that will be gained next year when UNLV joins the Western Athletic Conference.

"There has never been any gender equity in college athletics," Harter said. "We have to try harder to be more attentive to women's sports, on a legal and moral level. Our problem is no worse than many of the universities."

Average revenue for women's athletics at UNLV is \$11,657, which is a far cry from the WAC average of \$208,977. Yet UNLV's total athletic budget of \$9.58 million is more than the WAC average of \$9.36 million.