

**TUESDAY EDITION**

**INSIDE**

Recycling on campus is an easy task ..... pg. 3  
 Otis and Arthur butt heads over Joe Mills ..... pg. 5  
 Want to babysit? ... pg. 12

**THE REBEL YELL**

The Student Newspaper of the University of Nevada, Las Vegas

**SPORTS**

*"I was very happy with our running game. If we can get our passing game going I think we will be a pretty good team."*

—Coach Jeff Horton in the wake of the 38-0 loss to Rice Saturday.

Please see "UNLV turns game over to Rice" in SPORTS page 9

**FEATURES**



The Haight provides students with cool clothes for low prices.

Please see "Back to cool" in FEATURES page 8

September 5, 1995

Volume 19 No. 3

**Faculty hires to fill positions not in budget**

BY DAVID DRUDGE  
 STAFF WRITER

University administrators say what appears to be a hiring freeze on the UNLV campus is actually a result of inadequacies in past budgets.

Ken Hanlon, acting vice president for academic budgeting and facilities, explained that though the Nevada Legislature provided enough money to hire an additional 46 full-time faculty for this school year, additional hires would not happen at this time.

"When Kenny Guinn took over as interim president and examined the various aspects of the budget, he discovered

that on the instructional side of UNLV's operational budget the university was spending more money on faculty than was budgeted for by the Legislature," Hanlon said.

Last year, UNLV had about 67 full-time faculty positions, or the equivalent of that in dollars over budget. "This year, we have brought that down to 32 positions, but are still operating over our budgeted allotment," he said. "That, in essence, appears to be a freeze because, we are faced with the question: Though you have new positions available to fill, why didn't you hire anybody?"

According to Hanlon, this

spring UNLV "had a number of early retirements and the usual amount of worker attrition. UNLV went out and recruited new people to fill those positions. But, in just about every instance we are not talking about a new position, but rather filling a vacancy that existed."

Hanlon said the problem doesn't rest on the side of UNLV administration officials as much as it does with the Legislature's formula for hiring. This formula is figured by attempting to calculate the student to teacher ratio, which is set at 21 students per faculty member.

"What you really get in

round number terms is about another \$50,000 to offer a potential hiree, and that includes fringe benefits and everything," he explained. "Will that \$50,000 buy another faculty member? It all depends on which department you are talking about," he said. "The humanities, social sciences and the arts generally do not have very high salaried instructors, so that amount might cover hiring someone in those departments. But, you can't buy an accounting professor with that kind of money. In most cases, the dollars do not necessarily buy the number of bodies that they may appear to be able to do."

Another influencing factor is student enrollment. When enrollment goes down, the dollars expected to be generated by student registration is decreased proportionately in UNLV's operating budget, classes are canceled, and hiring of new faculty members is negatively impacted. Campus officials admit that this domino effect is a vicious circle fraught with hard to predict results. However, when budget estimates fall short of their targeted amount the whole university suffers.

As much as being over budget affects hiring new full-time

Please see Hanlon—3



PHOTO BY HYUN-HO HAN

Alpha Delta Pi members Linda (l.), Cookie, Danielle and Jolene attend a rush event held Monday night in the MSU.

**Shuttle program revised to increase efficiency**

BY ERIN NIEMEYER  
 STAFF WRITER

The UNLV safety shuttle program has been revised to increase its efficiency during nighttime operating hours.

Student Services Director Ted Grenhalgh, who oversees the shuttle program, has created a circular route for the shuttles to travel weeknights from dusk to midnight.

Stops on the shuttle route include: the P.E. Complex, the Sidewalk Cafe, James R. Dickinson Library, Moyer Student Union, Brussels Street parking lot and the Student Services Complex. The shuttles operate every 20 minutes.

However, not all UNLV students are aware of the program's existence.

Several dorm residents claim to never have seen either of the shuttles and some had never even heard of the service. Many asked, "Where is it?"

"I know that it's available,

but I haven't seen it yet," said junior Derek Frommert.

Freshman Chris Swanic, an employee of the UNLV Bookstore, had a disturbing experience with a shuttle bus on Wednesday.

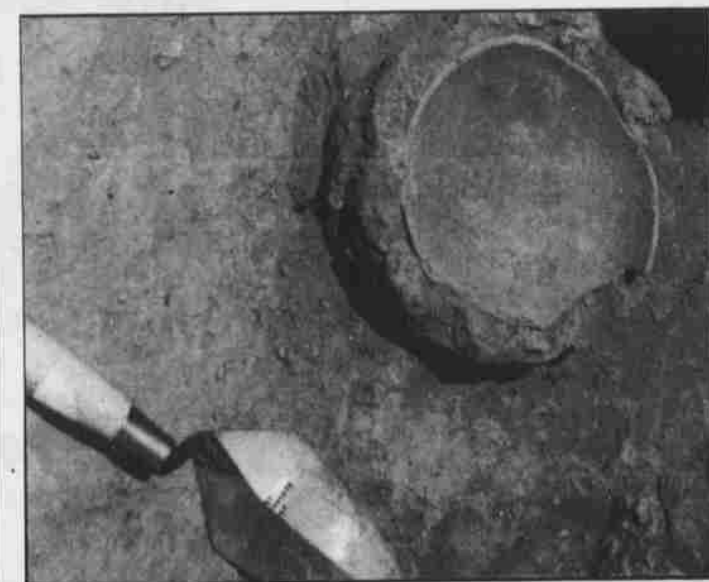
"It zoomed past me going about 25 mph at 9 p.m., but it didn't stop to pick me up," she stated.

"I've placed signs all over campus," Grenhalgh said of his effort to increase awareness of the service. "People who only attend the university during daylight hours won't see the shuttles, but those who take night classes do use them."

Grenhalgh added, "Everybody knows it's available. It's a matter of personal preference as to whether or not they want to use them. People who know about the service use it all of the time. Others never use it."

For more information, contact the UNLV Public Safety office at 895-3668.

**Bone Diggers...**



PHOTOS BY PAUL BUCK  
 Jan Williams (above) is shown taking measurements to complete a grid map for the unit she is excavating. A ceramic bowl, found nearly intact, is an example of the kinds of artifacts found at UNLV's Summer Field School.

Please see "Getting an edge with education and experience" FEATURES page 7