

From Horton to Bayno to Dallimore, read Sports Editor Michael Melissa's "Off the Bench" column every week in the Rebel Yell Sports pages.



**Shower Curtain Kit**

Durable kit includes shower curtain and rings, all in one package. Choose from a variety of solid colors. #77433

**3<sup>87</sup>**



**Hardwood Bar Stools**

Choose 24" or 29" tall stools with natural finish seat and white or natural finish legs. Fully assembled.

24" Stool

#FAA7425 98914/957

**19<sup>98</sup>**

29" Stool

#FAA732 526900-965

**24<sup>98</sup>**



**Light Bulbs**

4-Pack bulbs are available in 40, 60, 75 or 100 watts. #40ABB4PK/60ABB4PK/75ABB4PK/100ABB4PK 460834/761/818/788

Your Choice 4-Pack

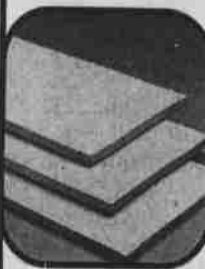
**99¢**



**Jiffy Bookcase**

Assembles without tools. Made of high-density particle board. 36"W x 9"D x 36"H. 415901

**9<sup>96</sup>**



**12" Particleboard Shelving**

4' 111252 **1<sup>97</sup>** 6' 111279 **3<sup>77</sup>** 8' 111295 **4<sup>77</sup>**

Screen Wall Block #57270 **1<sup>75</sup>**



**5-Piece Bridge Set**

Table and chairs fold for compact storage. 34" x 34" table features padded vinyl top. #99852 361763

**59<sup>88</sup>**



**Oak Veneer File Cabinet**

Two-drawer cabinet has one locking drawer with two keys. 15 5/8" x 17" x 28". 520691

**39<sup>96</sup>**

**ERNST**

**HOME & NURSERY<sup>®</sup>**  
Always More For Your Money. ALWAYS! <sup>SM</sup>

**BACK to SCHOOL Values!**



**Computer Work Center**

Oak finish desk features a sliding keyboard shelf and drawer. Easel adjusts for convenience and comfortable viewing. 49 7/8" H x 47 1/2" L x 23 1/2" W. #2337 858368

**\$118**

**Office Chair**

#C295 349119

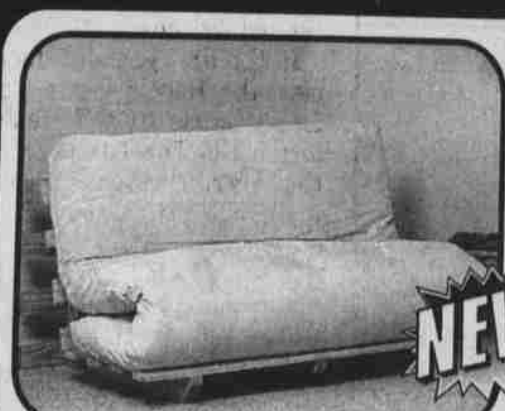
**\$39**



**Entertainment Center**

Versatile entertainment center lets you organize TV, VCR and audio components in one unit. Features space for 27" TV, and handsome royal oak-tone finish. 47 3/8" x 15 1/2" x 40". 430854

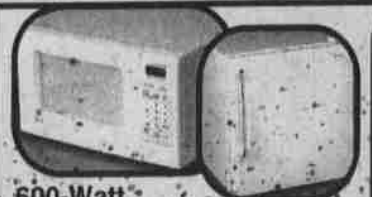
**\$49**



**Futon**

Versatile futon has natural wood color. Great for small spaces. Comes with mattress. 53 1/2" x 32 3/4" x 18". 491128

**NEW! \$138**



**600-Watt Compact Microwave Oven**

Features 0.6 cu. ft. food capacity. #EM604TW 589624

**Cube Refrigerator**

High-efficiency 1.7 cu. ft. compact refrigerator. #SR-170W 589152

Your Choice

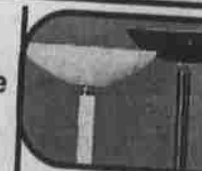
**\$119**

**69" 3-Way Torchiere Lamp**

Adjustable to 50, 100, 150-watt setting. #HL624

Black 326526 White 326615

**9<sup>97</sup>**



**72" 3-Way Torchiere Lamp**

#G1084 White 235997 Black 404713

**13<sup>97</sup>**



**Clip-On Lamp**

#CLC-105 119652/679/687

**Elbow Lamp**

#G-2512 084824/816/683/841

**6<sup>44</sup>**

**4<sup>93</sup>**



**Classic Door Mirror**

Your choice of handsome walnut or white painted frame. 12"W x 54"L. #812/10 647845/853

**5<sup>97</sup>**



**6-Outlet Strip**

Grounded outlet with circuit breaker protection. 516813

**2<sup>97</sup>**

**6-Ft. Extension Cord**

#A2101-006 233846/854 911372 399/453

**149**



**19-Gallon Muck Bucket**

Can be used as a cooler, for storage of toys or other household items. 911372 399/453

**11<sup>97</sup>**



**6" Upright/Hanging Houseplants**

Our thriving assortment includes popular, easy-care varieties. 727288/ 263672

**4<sup>97</sup>**

Percentages shown represent discounts based on our already low, day-in, day-out prices. If a product is on sale, you will receive the sale price or the percentage off the day-in, day-out price, whichever is lower. While supplies last. Sorry, no rainchecks. Availability of products vary from store to store. No sales to dealers and competitors. Quantities may be limited.