



CARYN SIMON PLAYS HER PART FOR THE AMERICAN RED CROSS

PLAY Your Part

+ American Red Cross

BE A RED CROSS VOLUNTEER

Why Become a P.E.?



"A professional engineering license is an asset in corporations like Du Pont. In our internal and external partnership agreements, the P.E. is a standard of measure that transcends corporate boundaries."

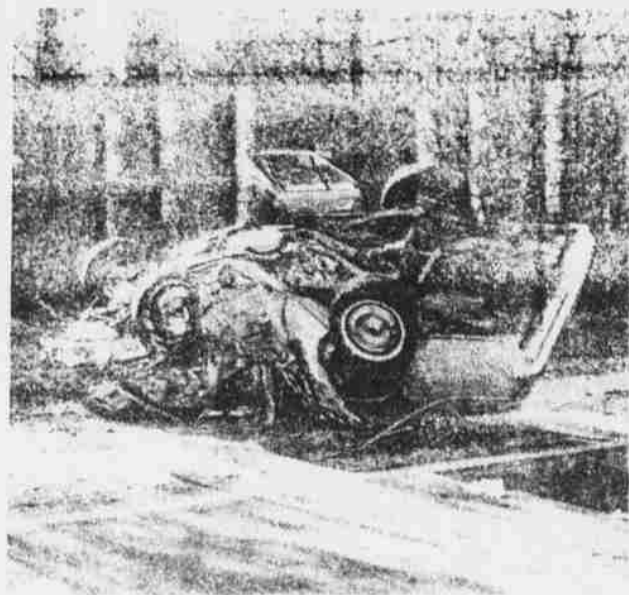
Deborah L. Grubbe, P.E.
Manager/Engineering Department
E.I. du Pont de Nemours & Company

More job opportunities. Promotability. Higher salaries. Professional Engineers enjoy many benefits of registration. To become a P.E., you first must pass the Fundamentals of Engineering (FE) exam—also known as the EIT exam—administered every fall and spring. Call the dean's office or your state registration board for testing dates and locations.

For exam information, write:
National Council of Examiners for Engineering and Surveying
P.O. Box 1686
Clemson, S.C. 29633-1686

You can't see HIV.

If you think you're at risk talk to a doctor, your health department, or other local AIDS resources. Or call the National AIDS Hotline 1-800-342-AIDS. Call 1-800-243-7889 (TTY) for deaf access.



Ever Get Somebody Totally Wasted?

TAKE THE KEYS
CALL A CAB
TAKE A STAND



FRIENDS DON'T LET FRIENDS DRIVE DRUNK

Free for life.

(Offer expires only when you do.)



Get an AT&T Universal MasterCard and you'll be eternally grateful. Because it's more than just a credit card that's free of annual fees forever. It's also an AT&T Calling Card that currently gives you a 10% discount on already competitive AT&T Calling Card rates. It's all part of **The i Plan.**



To apply, come by our booth on campus or call
1 800 438-8627.



© 1993 AT&T