



The Yellin' Rebel

TUESDAY
EDITION

November 19, 1991

—UNLV's campus newspaper—

Volume 13, No. 24

Students return to polls today

Tuesday and Wednesday students will again vote on a proposed \$20 health fee. This second election was made necessary after the words "full-time" were left off the first ballot from the Oct. 19-20 vote.

Lori Winchell, director of the Student Health Center, did a national survey of health centers at institutions of similar size to UNLV. Her study found UNLV's facilities and budget to be greatly deficient.

The proposed fee would allow for expansion of the health center building and its staff. The health center claims that among other things the fee would allow for:

- An increase in physician's hours from 20 to 40
- An increase in pharmacist's hours from eight to 40
- Add a full-time laboratory technologist and increase laboratory services
- Increase registered dieticians hours from four to 20
- Add on-campus X-ray facilities
- Increase number of exam rooms from four to 12

"It's not a binding vote," said Robert Ackerman, Vice President for Student Services. "The regents would have to approve it. Ackerman said that President Robert Maxson would probably OK it before it went to the Board of Regents.

Where and when can students vote?

Four booths will be set up on campus at:
The library (east entrance)
Beam Engineering, building B (south entrance)
Frank and Estella Beam Hall
Flora Dungan Humanities building

Voting booths will be open from 9 a.m. to 7 p.m.

Flasher bares all on campus

by Kelly Hansen

An exhibitionist has been spotted at various locales on campus, exposing himself to one individual in each instance.

Thus far there have been two reported flashing incidents. Although indecent exposure is not a nonexistent problem on campus, these two cases have a different twist: a male flashing another male.

The first incident occurred at the corner of University Road and Maryland Parkway at 5:45 p.m. Oct. 22 in lot E. The victim alleged that a white male

pulled up in a car next to him and exposed himself in a state of undress while masturbating.

The second incident happened at 12:15 p.m. Nov. 1, in the Brussels Road parking lot. The victim said that a white male pulled up in a car and solicited sexual conduct and then exhibited his genitalia.

"We follow these cases very aggressively. These people are not harmless," said Detective Sgt. Lonnie Barrett of University Police.

The flasher has not yet been apprehended. He is

see BARE page 3

Regents meet this week to discuss video tapings

by Tricia Romano and Bonar Tucker

The Board of Regents have their work cut out for them at the closed personnel meeting scheduled for Wednesday, in the Alumni Center. It is at this session that the infamous secret tapings will be discussed for the regents to hear first-hand the administrator's

versions. University President Robert Maxson, Assistant Legal Counsel Brad Booke, former Interim Athletic Director Dennis Finrock and University Police Chief Dave Hollenbeck have been requested to attend by the regents.

The meeting, which will begin at 10 a.m., has raised a few eyebrows as to the

reasoning behind its being closed to the public. However, Regent Shelley Berkley has invited input from whomever is necessary in order to help.

Berkley said, "We are trying to take this out of the realm of secrecy. If anyone is interested in having input and has informative facts, they should call Chair Carolyn Sparks and ask to

be heard."

Regent Jill Derby called the hidden camera a "grave violation" and said the regents need to ask what happened and why at the personnel session.

"I think the tapings were a setback for the university," she said. "I'm very concerned that they (the

see REGENTS page 3

The birds

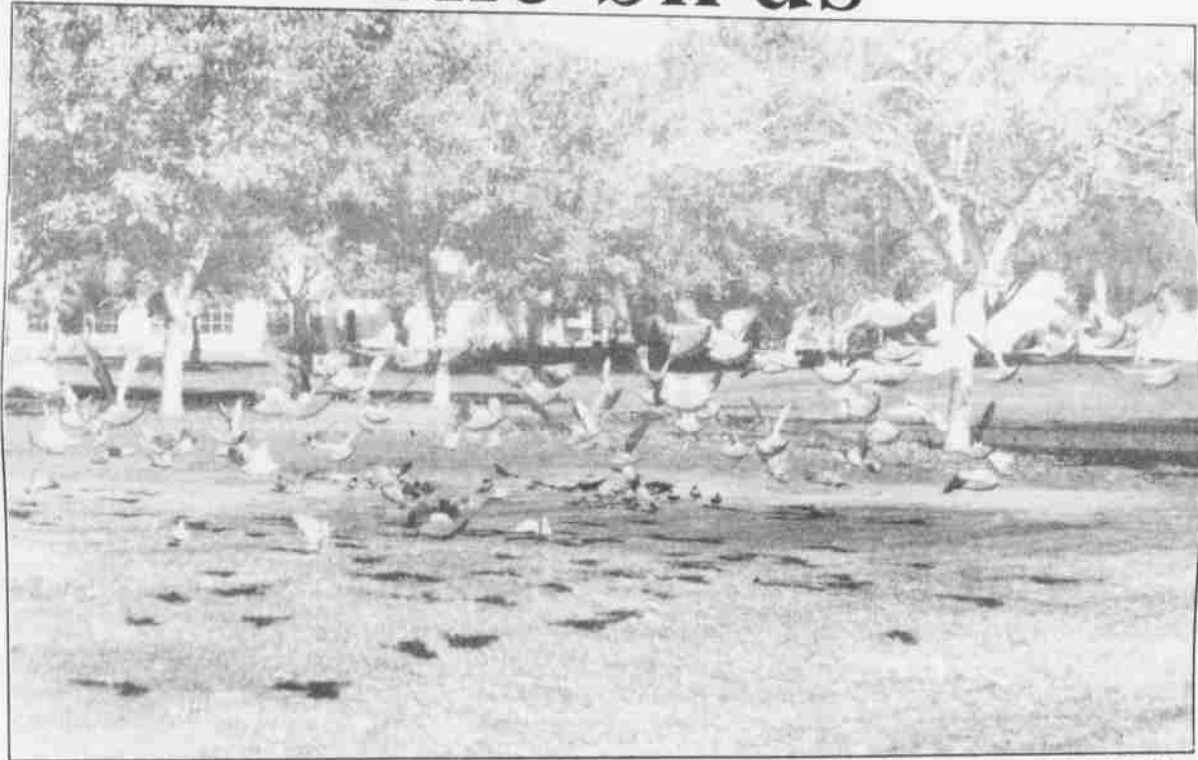


photo by Rick Nielsen

MSU opening pushed back once again

by Morgan Fisher

the delay.

Theresa Chiang said there is just one more day until the Moyer Student Union opens. The union had been scheduled to open Monday but has again been pushed back, this time to Wednesday.

Do to floor tiles made of asbestos the university decided to lay carpet instead of new tiles. There has been some problem with the carpet installation, hence

Eric Walters, assistant director of the MSU said that there were problems lining up the seams in the carpeting.

"We also ordered a special glue so that the carpet will stay down longer, and if all goes well we'll open on Wednesday," said Walters.

Coupons from the Nov. 14 issue of *The Yellin' Rebel* for the book store's second location in the MSU are still valid at the main store.



photo by Morgan Fisher

Tables stacked upon tables at the unopened MSU.

INSIDE...

SPORTS

The Rebels end their three-game losing streak with 38-28 win
— page 9



LIFESTYLES

Bikers break conformist rules as well as regulations
— page 7

