

UNLV faculty to teach in public schools

When professors from UNLV's College of Education look out over their classes on Oct. 15, they will find them smaller.

Not smaller in terms of class size; smaller in terms of student size.

Instead of the usual array of college faces looking back at them, professors will find themselves face to face with elementary school students.

The professors from UNLV will spend two hours each day, for two days, in elementary classrooms substituting so that the elementary teachers can receive special training for the Accelerated Schools Project.

Professors will substitute at Herr Elementary School on Oct. 15 and at Whitney Elementary School on Oct. 17.

The Accelerated Schools Project, started at Stanford University, now is in place at more than 100 schools nationwide. The program in Las Vegas is part of the Stanford-based program and is being conducted locally as a joint effort between UNLV

and the Clark County School District.

Education professor Jane McCarthy, who served as national director of the Accelerated Schools Satellite Center Project at Stanford, brought the program with her to Southern Nevada when she joined the UNLV faculty this fall.

The project usually involves schools with large numbers of at-risk students, all children are treated as if they were gifted and talented, McCarthy said.

"The Accelerated Schools Project provides enriched educational experience rather than a watered-down remedial program," she said. "The notion is that at-risk students must learn at a faster rate than their more privileged counterparts in order to perform at grade-level or beyond by the end of elementary school."

Brian Cram, superintendent of the Clark County School District, said "We are delighted to participate in this project because we think it will be of great interest to

the kids. We feel that the university professors will also gain some additional insight into today's schools by going out into the schools to assist with the teaching."

Implementation of the program requires special training for teachers which is why UNLV professors have been asked to substitute.

About 20 professors have volunteered to substitute for the elementary teachers during training sessions.

One of the Education College faculty members planning to participate is Elaine Jarchow, the new associate dean.

Jarchow is considering teaching a lesson about Japan. A former high school teacher, she said she has asked to be assigned to fifth-grade classes.

"It will be good for our professors who, of course, are often accused of being in ivory towers and never being out in real schools, while at the same time teaching people how to teach in real schools," she said.

CORRECTIONS:

The article in the Oct. 1 issue about Tom Wolfe's address at UNLV contains the following quote: "After the second world war, for the first time prominent writers. . ." The article should have stated, "After the first world war. . ."

In addition, the date given in one of Wolfe's quotes was Nov. 9, 1990. It should have read Nov. 9, 1989.

The article in the Sept. 26 issue about the Student Health Center reported that the health center building currently has 28,000 square feet and will be expanded to 68,000 square feet. The figures should read 2,800 square feet and 6,800 square feet. In addition there is a

quote attributed to Lori Winchell which stated, "The reasons for waiting in line for medical attention are due to drastic budget cuts initiated by the state Legislature." This quotation was due to a staff error.

In the Sept. 19 issue the article about the new computer building stated that, "all the computers on the campus, except for the Cray Supercomputer. . . will be moved." Actually being moved are two Sun 3/280 minicomputers, a DEC System 5000-200 and a VAX 6000-42. The last was reported as a VAX 600-42.

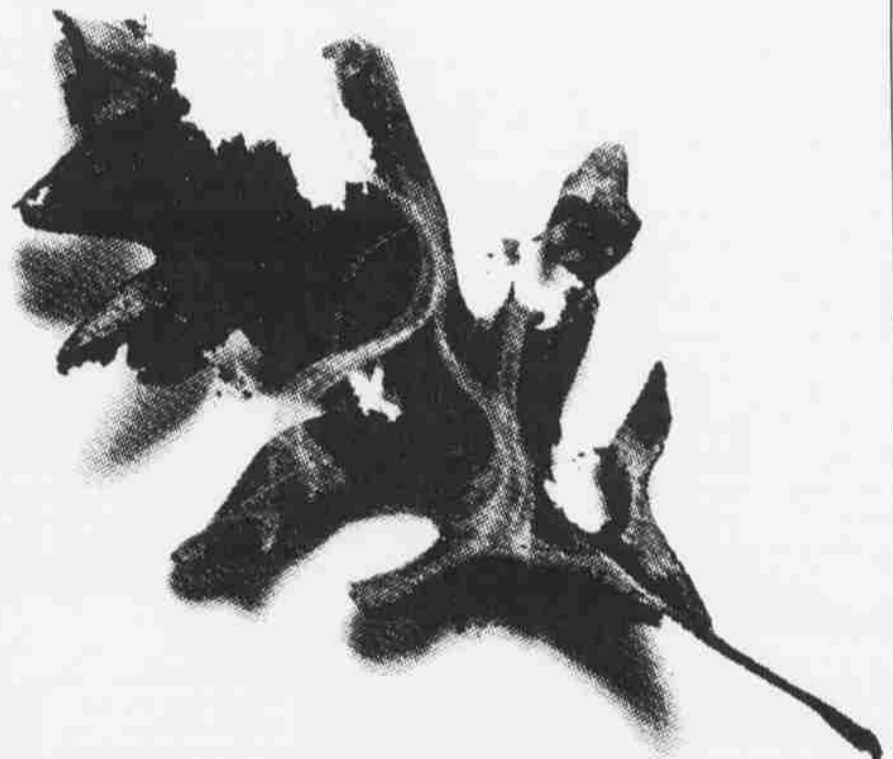
Also the article stated that the new IBM system which is to be installed in January is "the second most

powerful computer in the world." According to Davan Weddle of UNS Computing Services this is not true. Also, while University of Nevada System does own the new building, UNLV will maintain it.

Finally, the building's facilities will be available only to members of the University System community, not to local business employees.

The article in the Oct. 3 issue about rape contains the following quote: "Dominance is part of the male socialization about sexuality and with females permissiveness is their socialization." The article should have stated "with females submissiveness is their socialization."

BURN VICTIM.



A Public Service of the USDA Forest Service and your State Forester.

ONLY YOU CAN PREVENT FOREST FIRES.

PLAY YOUR PART

BE A RED CROSS VOLUNTEER

