

United Parcel Service, an equal opportunity employer, is seeking permanent part-time positions.

Pay is \$8.00/hour. Two shifts are available. Preload shift from 3:45am to 8:30am and the Hub shift from 6:00pm to 10pm.

Qualifications: Must be 18 years of age and be able to lift up to 70lbs.

To apply, please go to the job placement office which is located on the 3rd floor of the Humanities building.

*Looking for part-time permanent employment?
Find it at...*

United Parcel Service



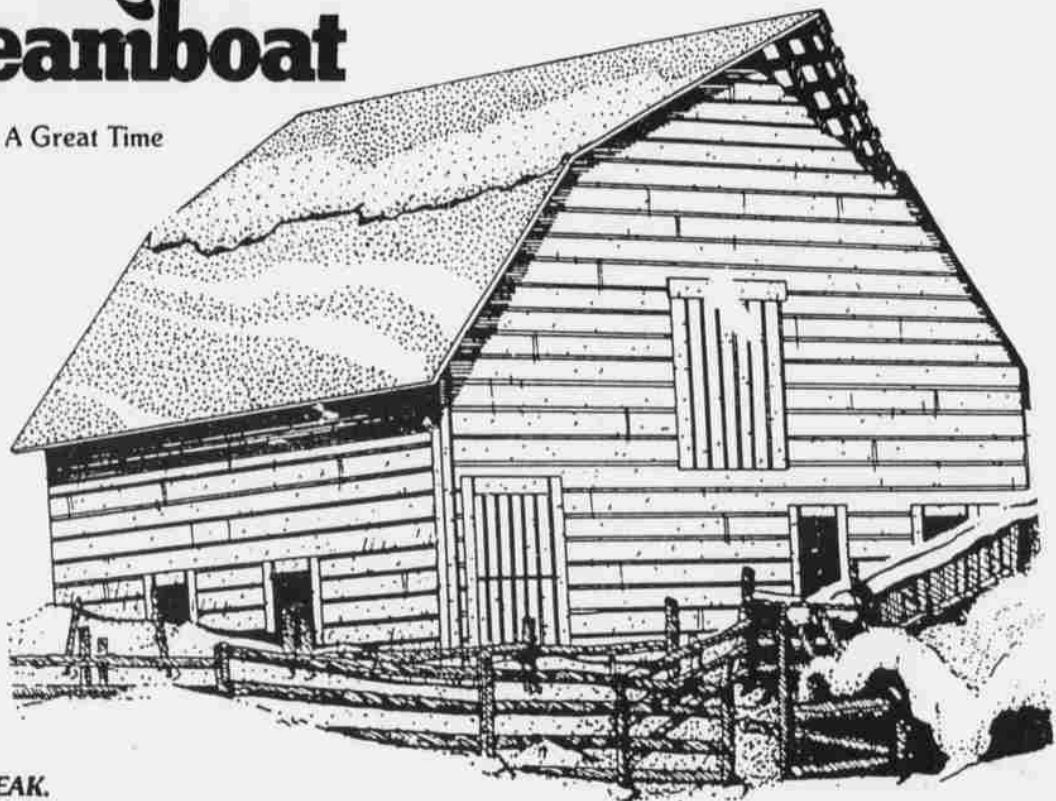
United Parcel Service

COLLEGE DAYS IN **Steamboat**

A Package For Students That Like Skiing Or Just Love A Great Time

January 5 - 13,
1991

\$ 332⁰⁰ WITH MOTORCOACH TRANSPORTATION

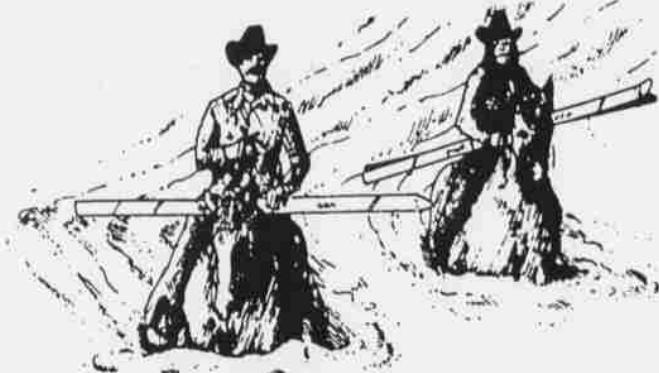


COMPARED TO OTHER SKI AREAS, STEAMBOAT IS THE PLACE TO BE OVER WINTER BREAK. FILLED WITH STUDENTS FROM ALL OVER THE NATION, IT'S A GREAT TIME YOU DON'T WANT TO MISS.

THE OFFICIAL "COLLEGE DAYS" PACKAGE INCLUDES:

- Transportation packages include round trip transportation to Steamboat Springs, Colorado. Motor coach package (if available) will depart from your campus. We use the most modern and fully equipped coaches available. Air package (if available) will include air flights and motor coach transfers to your accommodations.
- Accommodations at luxury condominiums located right in Steamboat Village. Most accommodations include a fireplace, full kitchen, bar, counter area, color TV, balcony, outdoor heated pool, and hot tubs.
- A souvenir photo lift ticket at Steamboat.
- Full time travel reps to throw parties and take good care of you.
- A great schedule of parties and activities in Steamboat - events such as hot tub happy hours, mountainside wine and cheese parties and evening blowout parties - lots of free refreshments, good music, and some great times.
- Coupon books with discounts at local establishments.
- Optional side trips to Vail.
- Optional ski rentals at greatly reduced rates.
- Optional ski lessons for all types of skiers at reduced rates.
- All taxes and tips included.

Arrangements by ECHO TRAVEL INC.



**Moyer Student Union Room 102
(Games Room)
M-W-F 1:00 - 7:00 pm**

MOUNTAIN FACTS

Elevation: 6,900 ft.
Base: 9,080 ft.
Midmountain Thunderhead: 10,500 ft.
Top Storm Peak: 3,600 ft.
Vertical Drop: 2500 acres
Skiable Terrain: 1400 trails
Average Annual Snowfall: 27 feet
Longest Run: 2 1/2 miles (High Noon)

Difficulty: Beginner 15%, Intermediate 54%, Advanced 31%, Total Runs: 101
Trail Grooming: Trails are groomed every evening by our fleet of "snow cats."
Total Lifts: 20
Lift Capacity: 28,730 skiers per hour
Snowmaking cover: 293 acres

Reservations are due by Nov. 1st

739-3879